

Datasheet for ABIN7275591

**SIGLEC8 Protein (AA 17-363) (Fc Tag)**[Go to Product page](#)**2** Images

## Overview

Quantity:	100 µg
Target:	SIGLEC8
Protein Characteristics:	AA 17-363
Origin:	Human
Source:	HEK-293 Cells
Protein Type:	Recombinant
Purification tag / Conjugate:	This SIGLEC8 protein is labelled with Fc Tag.

## Product Details

Purpose:	Human Siglec-8 Protein
Sequence:	Met17-Ala363
Characteristics:	Recombinant Human Siglec-8 Protein is expressed from HEK293 with hFc tag at the C-Terminus. It contains Met17-Ala363.
Purity:	> 95 % as determined by Tris-Bis PAGE, > 95 % as determined by HPLC
Sterility:	0.22 µm filtered
Endotoxin Level:	Less than 1EU per µg by the LAL method.

## Target Details

Target:	SIGLEC8
Alternative Name:	Siglec-8 ( <a href="#">SIGLEC8 Products</a> )

## Target Details

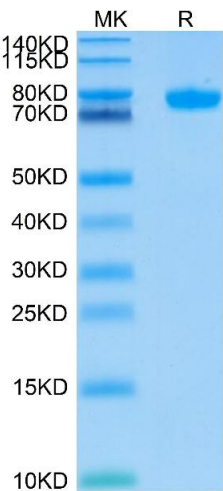
Background:	Siglec-8, also known as SAF, is an approximately 75 kDa transmembrane glycoprotein in the Siglec family of sialic acid-binding immune regulatory molecules. Mature human Siglec-8 consists of a 347 amino acid (aa) extracellular domain (ECD) with three Ig-like domains. Putative adhesion molecule that mediates sialic-acid dependent binding to red blood cells. Preferentially binds to alpha-2,3-linked sialic acid. Also binds to alpha-2,6-linked sialic acid.
Molecular Weight:	64.6 kDa. Due to glycosylation, the protein migrates to 70-82 kDa based on Tris-Bis PAGE result.
UniProt:	<a href="#">Q9NYZ4</a>

## Application Details

Restrictions:	For Research Use only
---------------	-----------------------

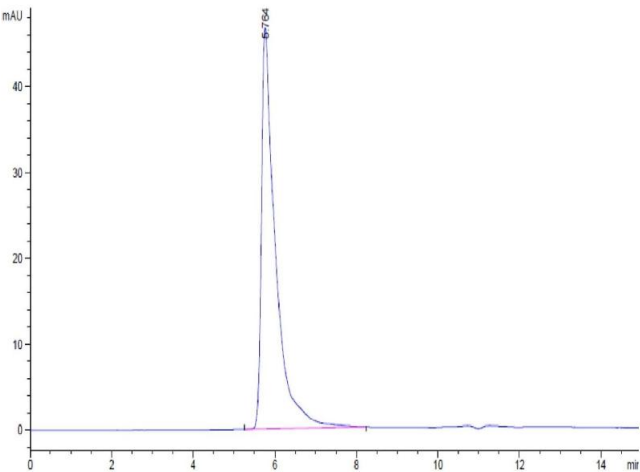
## Handling

Format:	Lyophilized
Reconstitution:	Centrifuge the tube before opening. Reconstituting to a concentration more than 100 µg/mL is recommended. Dissolve the lyophilized protein in distilled water.
Buffer:	Lyophilized from 0.22µm filtered solution in PBS ( pH 7.4). Normally 8 % trehalose is added as protectant before lyophilization.
Storage:	-20 °C, -80 °C
Storage Comment:	-20 to -80°C for 12 months as supplied from date of receipt., -80°C for 3-6 months after reconstitution., 2-8°C for 2-7 days after reconstitution., Recommend to aliquot the protein into smaller quantities for optimal storage. Please minimize freeze-thaw cycles.
Expiry Date:	12 months



SDS-PAGE

**Image 1.** Human Siglec-8 on Tris-Bis PAGE under reduced conditions. The purity is greater than 95 % .



Size-exclusion chromatography-High Pressure Liquid Chromatography

**Image 2.** The purity of Human Siglec-8 is greater than 95 % as determined by SEC-HPLC.