



[Go to Product page](#)

Datasheet for ABIN7275600

SIGLEC6 Protein (AA 27-331) (His-Avi Tag)

2 Images

Overview

Quantity:	100 µg
Target:	SIGLEC6
Protein Characteristics:	AA 27-331
Origin:	Human
Source:	HEK-293 Cells
Protein Type:	Recombinant
Purification tag / Conjugate:	This SIGLEC6 protein is labelled with His-Avi Tag.

Product Details

Purpose:	Human Siglec-6/CD327 Protein
Sequence:	Gln27-Val331
Characteristics:	Recombinant Human Siglec-6/CD327 Protein is expressed from HEK293 with His tag and Avi tag at the C-Terminus.It contains Gln27-Val331.
Purity:	> 95 % as determined by Tris-Bis PAGE,> 95 % as determined by HPLC
Sterility:	0.22 µm filtered
Endotoxin Level:	Less than 1EU per µg by the LAL method.

Target Details

Target:	SIGLEC6
Alternative Name:	siglec-6 (SIGLEC6 Products)

Target Details

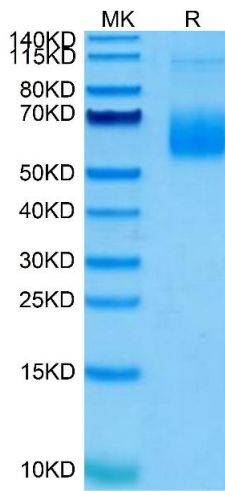
Background:	Siglecs (Sialic acid binding Ig-like Lectins) are I-type (Ig-type) lectins that belong to the Ig superfamily. They are characterized by an N-terminal Ig-like V-type domain which mediates sialic acid binding, followed by varying numbers of Ig-like C2-type domains. Putative adhesion molecule that mediates sialic-acid dependent binding to cells. Binds to alpha-2,6-linked sialic acid. The sialic acid recognition site may be masked by cis interactions with sialic acids on the same cell surface.
Molecular Weight:	36.6 kDa. Due to glycosylation, the protein migrates to 55-70 kDa based on Tris-Bis PAGE result.

Application Details

Restrictions:	For Research Use only
---------------	-----------------------

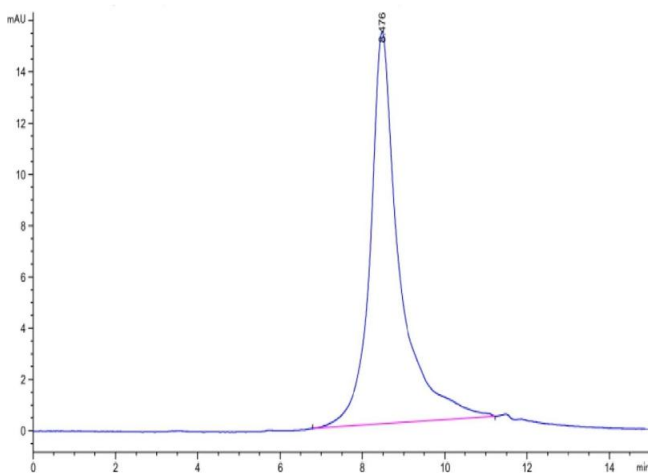
Handling

Format:	Lyophilized
Reconstitution:	Centrifuge the tube before opening. Reconstituting to a concentration more than 100 µg/mL is recommended. Dissolve the lyophilized protein in distilled water.
Buffer:	Lyophilized from 0.22µm filtered solution in PBS (pH 7.4). Normally 8 % trehalose is added as protectant before lyophilization.
Storage:	-20 °C, -80 °C
Storage Comment:	-20 to -80°C for 12 months as supplied from date of receipt., -80°C for 3-6 months after reconstitution., 2-8°C for 2-7 days after reconstitution., Recommend to aliquot the protein into smaller quantities for optimal storage. Please minimize freeze-thaw cycles.
Expiry Date:	12 months



SDS-PAGE

Image 1. Human Siglec-6 on Tris-Bis PAGE under reduced condition. The purity is greater than 95 % .



Size-exclusion chromatography-High Pressure Liquid Chromatography

Image 2. The purity of Human Siglec-6 is greater than 95 % as determined by SEC-HPLC.