

Datasheet for ABIN7275606

CD22 Protein (AA 20-687) (His-Avi Tag,Biotin)**3** Images[Go to Product page](#)

Overview

Quantity:	100 µg
Target:	CD22
Protein Characteristics:	AA 20-687
Origin:	Human
Source:	HEK-293 Cells
Protein Type:	Recombinant
Purification tag / Conjugate:	This CD22 protein is labelled with His-Avi Tag,Biotin.

Product Details

Purpose:	Biotinylated Human Siglec-2/CD22 Protein
Sequence:	Asp20-Arg687
Characteristics:	Recombinant Biotinylated Human Siglec-2/CD22 Protein is expressed from HEK293 with His tag and Avi tag at the C-Terminus.It contains Asp20-Arg687.
Purity:	> 95 % as determined by Tris-Bis PAGE,> 95 % as determined by HPLC
Sterility:	0.22 µm filtered
Endotoxin Level:	Less than 1EU per µg by the LAL method.
Biological Activity Comment:	Immobilized Anti-Siglec-2 Antibody, hFc Tag at 0.5µg/ml (100µl/well) on the plate. Dose response curve for Biotinylated Human Siglec-2, His Tag with the EC50 of 19.1ng/ml determined by ELISA. See testing image for detail.

Target Details

Target:	CD22
Alternative Name:	Siglec-2 (CD22 Products)
Background:	<p>CD22, or cluster of differentiation-22, is a molecule belonging to the SIGLEC family of lectins. It is found on the surface of mature B cells and to a lesser extent on some immature B cells.</p> <p>CD22 a member of the immunoglobulin superfamily. CD22 functions as an inhibitory receptor for B cell receptor (BCR) signaling. It is also involved in the B cell trafficking to Peyer's patches in mice.</p>
Molecular Weight:	78.1 kDa. Due to glycosylation, the protein migrates to 110-120 kDa based on Tris-Bis PAGE result.

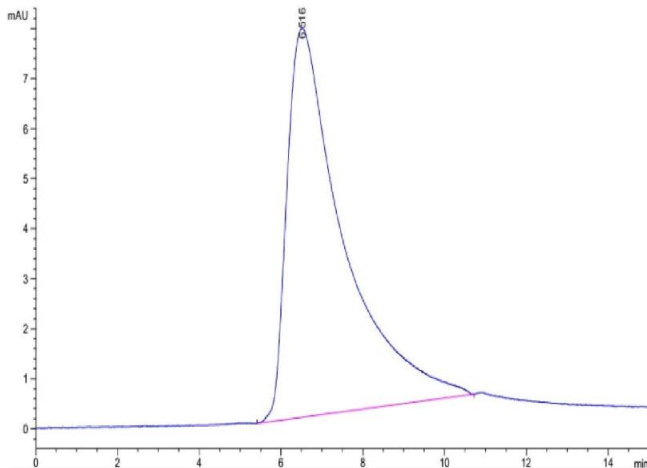
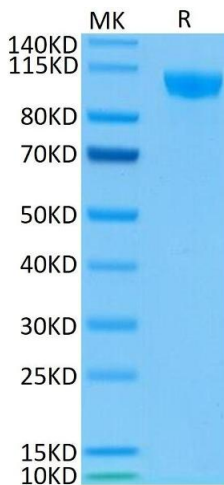
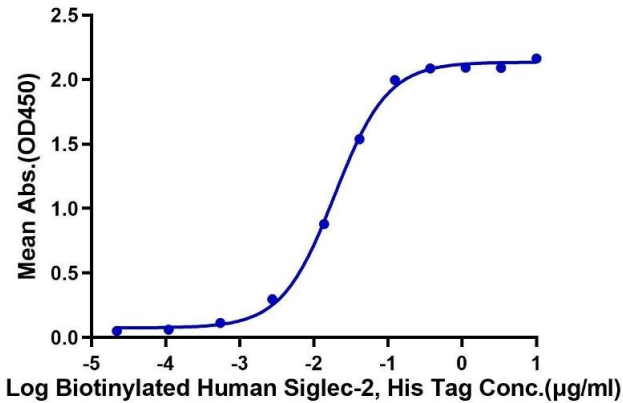
Application Details

Restrictions:	For Research Use only
---------------	-----------------------

Handling

Format:	Lyophilized
Reconstitution:	Centrifuge the tube before opening. Reconstituting to a concentration more than 100 µg/mL is recommended. Dissolve the lyophilized protein in distilled water.
Buffer:	Lyophilized from 0.22µm filtered solution in PBS (pH 7.4). Normally 8 % trehalose is added as protectant before lyophilization.
Storage:	-20 °C,-80 °C
Storage Comment:	-20 to -80°C for 12 months as supplied from date of receipt., -80°C for 3-6 months after reconstitution., 2-8°C for 2-7 days after reconstitution., Recommend to aliquot the protein into smaller quantities for optimal storage. Please minimize freeze-thaw cycles.
Expiry Date:	12 months

Biotinylated Human Siglec-2, His Tag ELISA
0.05µg Anti-Siglec-2 Antibody, hFc Tag Per Well



ELISA

Image 1. Immobilized Anti-Siglec-2 Antibody, hFc Tag at 0.5 µg/mL (100 µL/well) on the plate. Dose response curve for Biotinylated Human Siglec-2, His Tag with the EC50 of 19.1 ng/mL determined by ELISA.

SDS-PAGE

Image 2. Biotinylated Human Siglec-2 on Tris-Bis PAGE under reduced condition. The purity is greater than 95 % ..

Size-exclusion chromatography-High Pressure Liquid Chromatography

Image 3. The purity of Biotinylated Human Siglec-2 is greater than 95 % as determined by SEC-HPLC.