

Datasheet for ABIN7275607

SIGLEC15 Protein (AA 20-263) (His-Avi Tag)[Go to Product page](#)**4** Images

Overview

Quantity:	100 µg
Target:	SIGLEC15
Protein Characteristics:	AA 20-263
Origin:	Human
Source:	HEK-293 Cells
Protein Type:	Recombinant
Purification tag / Conjugate:	This SIGLEC15 protein is labelled with His-Avi Tag.

Product Details

Purpose:	Human Siglec-15/CD33L3 Protein
Sequence:	Phe20-Thr263
Characteristics:	Recombinant Human Siglec-15/CD33L3 Protein is expressed from HEK293 with His tag and Avi tag at the C-Terminus. It contains Phe20-Thr263.
Purity:	> 95 % as determined by Tris-Bis PAGE, > 95 % as determined by HPLC
Sterility:	0.22 µm filtered
Endotoxin Level:	Less than 1EU per µg by the LAL method.
Biological Activity Comment:	Immobilized Human Siglec-15, His Tag at 0.5µg/ml (100µl/well) on the plate. Dose response curve for Anti-Siglec-15 Antibody, hFc Tag with the EC50 of 4.6ng/ml determined by ELISA. See testing image for detail.

Target Details

Target:	SIGLEC15
Alternative Name:	Siglec-15 (SIGLEC15 Products)
Background:	Siglec-15 is a transmembrane glycoprotein in the Siglec family of sialic acid-binding immune regulatory molecules. Mature human Siglec-15 consists of a 244 amino acid extracellular domain (ECD) with two Ig-like domains, a 21 aa transmembrane segment, and a 44 aa cytoplasmic domain. Siglec-15 is a potential therapeutic target for osteoporosis and plays a conserved regulatory role in the immune system of vertebrates..
Molecular Weight:	29.5 kDa. Due to glycosylation, the protein migrates to 30-38 kDa based on Tris-Bis PAGE result.
UniProt:	Q6ZMC9

Application Details

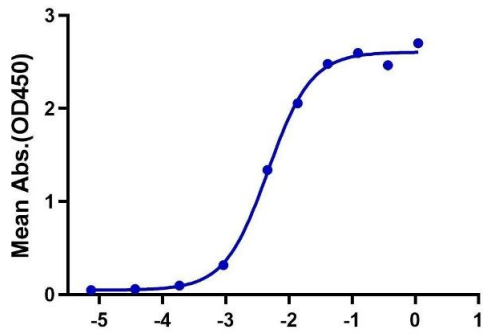
Restrictions:	For Research Use only
---------------	-----------------------

Handling

Format:	Lyophilized
Reconstitution:	Centrifuge the tube before opening. Reconstituting to a concentration more than 100 µg/mL is recommended. Dissolve the lyophilized protein in 20 mM NaAC (pH 5.0).
Buffer:	Lyophilized from 0.22µm filtered solution in 20 mM NaAC (pH 5.0). Normally 8 % trehalose is added as protectant before lyophilization.
Storage:	-20 °C,-80 °C
Storage Comment:	-20 to -80°C for 12 months as supplied from date of receipt., -80°C for 3-6 months after reconstitution., 2-8°C for 2-7 days after reconstitution., Recommend to aliquot the protein into smaller quantities for optimal storage. Please minimize freeze-thaw cycles.
Expiry Date:	12 months

Human Siglec-15, His Tag ELISA

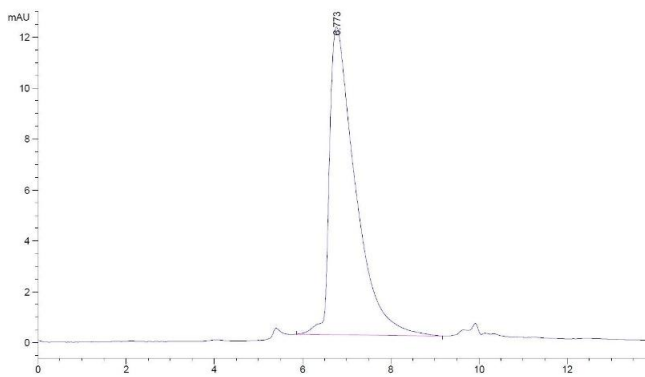
0.05µg Human Siglec-15, His Tag Per Well



Log Anti-Human Siglec-15 Antibody, hFc Tag Conc.(µg/ml)

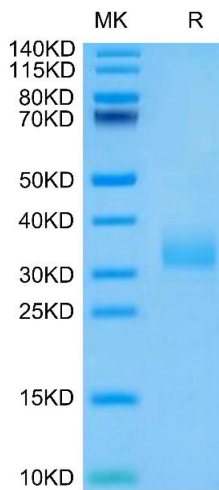
ELISA

Image 1. Immobilized Human Siglec-15, His Tag at 0.5 µg/mL (100 µL/well) on the plate. Dose response curve for Anti-Siglec-15 Antibody, hFc Tag with the EC50 of 4.6 ng/mL determined by ELISA.



Size-exclusion chromatography-High Pressure Liquid Chromatography

Image 2. The purity of Human Siglec-15 is greater than 95 % as determined by SEC-HPLC.



SDS-PAGE

Image 3. Human Siglec-15 on Tris-Bis PAGE under reduced condition. The purity is greater than 95 % .

Please check the [product details page](#) for more images. Overall 4 images are available for ABIN7275607.