

Datasheet for ABIN7275610

MAG Protein (AA 20-516) (His-Avi Tag,Biotin)**3** Images[Go to Product page](#)

Overview

Quantity:	100 µg
Target:	MAG
Protein Characteristics:	AA 20-516
Origin:	Human
Source:	HEK-293 Cells
Protein Type:	Recombinant
Purification tag / Conjugate:	This MAG protein is labelled with His-Avi Tag,Biotin.

Product Details

Purpose:	Biotinylated Human Siglec-4a/MAG Protein
Sequence:	Gly20-Pro516
Characteristics:	Recombinant Biotinylated Human Siglec-4a/MAG Protein is expressed from HEK293 with His tag and Avi tag at the C-Terminus.It contains Gly20-Pro516.
Purity:	> 95 % as determined by Tris-Bis PAGE,> 95 % as determined by HPLC
Sterility:	0.22 µm filtered
Endotoxin Level:	Less than 1EU per µg by the LAL method.
Biological Activity Comment:	Immobilized Anti-Siglec-4a Antibody at 2µg/ml (100µl/well) on the plate. Dose response curve for Biotinylated Human Siglec-4a, His Tag with the EC50 of 21.5ng/ml determined by ELISA. See testing image for detail.

Target Details

Target:	MAG
Alternative Name:	Siglec-4a (MAG Products)
Background:	Siglec-4a, also known as Myelin-Associated Glycoprotein (MAG), is a type I transmembrane glycoprotein belonging to the Siglec family, a subgroup of the Ig superfamily. Adhesion molecule that mediates interactions between myelinating cells and neurons by binding to neuronal sialic acid-containing gangliosides and to the glycoproteins RTN4R and RTN4RL2 (By similarity).
Molecular Weight:	57.6 kDa. Due to glycosylation, the protein migrates to 78-85 kDa based on Tris-Bis PAGE result.
UniProt:	P20916
Pathways:	Neurotrophin Signaling Pathway

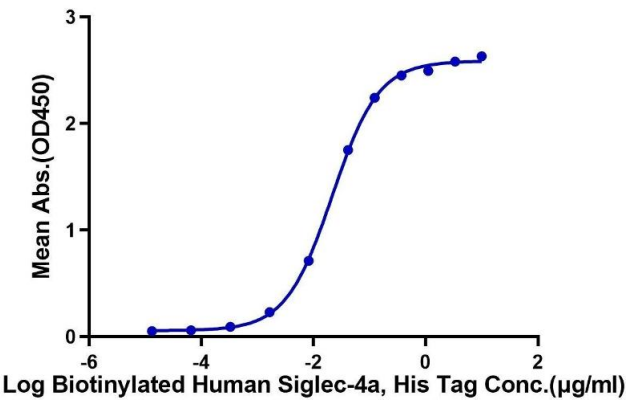
Application Details

Restrictions:	For Research Use only
---------------	-----------------------

Handling

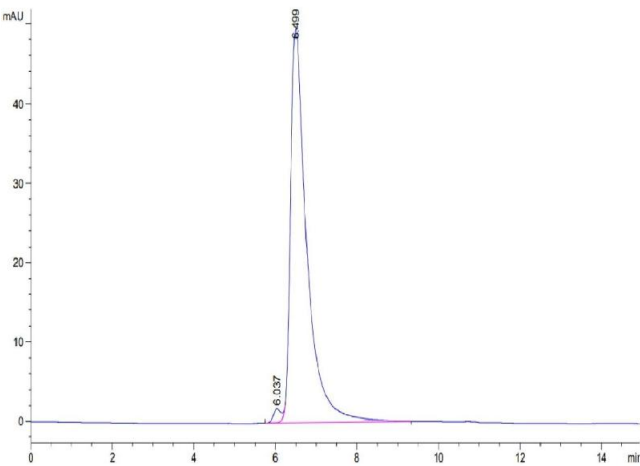
Format:	Lyophilized
Reconstitution:	Centrifuge the tube before opening. Reconstituting to a concentration more than 100 µg/mL is recommended. Dissolve the lyophilized protein in distilled water.
Buffer:	Lyophilized from 0.22µm filtered solution in PBS (pH 7.4). Normally 8 % trehalose is added as protectant before lyophilization.
Storage:	-20 °C,-80 °C
Storage Comment:	-20 to -80°C for 12 months as supplied from date of receipt.,-80°C for 3-6 months after reconstitution.,2-8°C for 2-7 days after reconstitution.,Recommend to aliquot the protein into smaller quantities for optimal storage. Please minimize freeze-thaw cycles.
Expiry Date:	12 months

Biotinylated Human Siglec-4a, His Tag ELISA
0.2µg Anti-Siglec-4a Antibody, hFc Tag Per Well



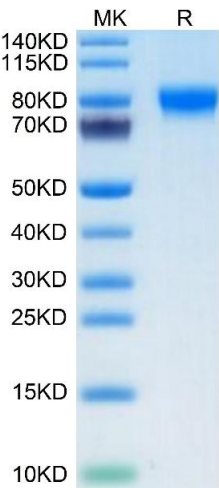
ELISA

Image 1. Immobilized Anti-Siglec-4a Antibody at 2 µg/mL (100 µL/well) on the plate. Dose response curve for Biotinylated Human Siglec-4a, His Tag with the EC50 of 21.5 ng/mL determined by ELISA.



Size-exclusion chromatography-High Pressure Liquid Chromatography

Image 2. The purity of Biotinylated Human Siglec-4a/MAG is greater than 95 % as determined by SEC-HPLC.



SDS-PAGE

Image 3. Biotinylated Human Siglec-4a/MAG on Tris-Bis PAGE under reduced condition. The purity is greater than 95 %.