



[Go to Product page](#)

Datasheet for ABIN7275611

SIGLEC10 Protein (AA 17-546) (Fc-Avi Tag)

3 Images

Overview

Quantity:	100 µg
Target:	SIGLEC10
Protein Characteristics:	AA 17-546
Origin:	Human
Source:	HEK-293 Cells
Protein Type:	Recombinant
Purification tag / Conjugate:	This SIGLEC10 protein is labelled with Fc-Avi Tag.

Product Details

Purpose:	Human Siglec-10 Protein
Sequence:	Met17-Thr546
Characteristics:	Recombinant Human Siglec-10 Protein is expressed from HEK293 with hFc tag and Avi tag at the C-Terminus.It contains Met17-Thr546.
Purity:	> 95 % as determined by Tris-Bis PAGE,> 95 % as determined by HPLC
Sterility:	0.22 µm filtered
Endotoxin Level:	Less than 1EU per µg by the LAL method.
Biological Activity Comment:	Immobilized Human Siglec-10 at 2µg/ml (100µl/Well) on the plate. Dose response curve for Biotinylated Anti-Siglec-10 Antibody, hFc Tag with the EC50 of 14.4ng/ml determined by ELISA. See testing image for detail.

Target Details

Target:	SIGLEC10
Alternative Name:	Siglec-10 (SIGLEC10 Products)
Background:	<p>Siglec-10 is a ligand for CD52, the target of the therapeutic monoclonal antibody Alemtuzumab. It is also reported to bind to Vascular adhesion protein 1 (VAP-1) and to the co-stimulatory molecule CD24 also known as HSA (Heat-stable antigen). Siglecs (sialic acid binding Ig-like lectins) are I-type lectins that belong to the immunoglobulin superfamily. They are characterized by an N-terminal Ig-like V-type domain which mediates sialic acid binding, followed by a varying number of Ig-like C2-type domains. Siglecs 5-11 constitute the CD33/Siglec-3 related group, and are differentially expressed in the hematopoietic system.</p>
Molecular Weight:	85.8 kDa. Due to glycosylation, the protein migrates to 95-110 kDa based on Tris-Bis PAGE result.

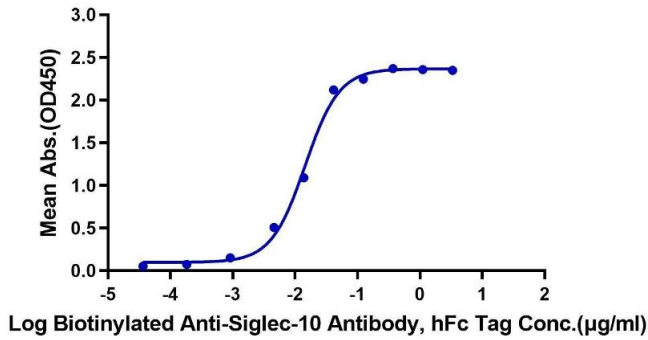
Application Details

Restrictions:	For Research Use only
---------------	-----------------------

Handling

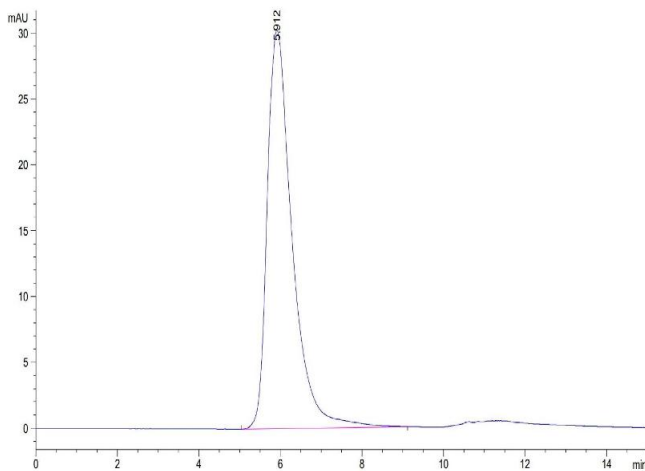
Format:	Lyophilized
Reconstitution:	Centrifuge the tube before opening. Reconstituting to a concentration more than 100 µg/mL is recommended. Dissolve the lyophilized protein in distilled water.
Buffer:	Lyophilized from 0.22µm filtered solution in PBS (pH 7.4). Normally 8 % trehalose is added as protectant before lyophilization.
Storage:	-20 °C,-80 °C
Storage Comment:	-20 to -80°C for 12 months as supplied from date of receipt., -80°C for 3-6 months after reconstitution., 2-8°C for 2-7 days after reconstitution., Recommend to aliquot the protein into smaller quantities for optimal storage. Please minimize freeze-thaw cycles.
Expiry Date:	12 months

Human Siglec-10, hFc Tag ELISA
0.2µg Human Siglec-10, hFc Tag Per Well



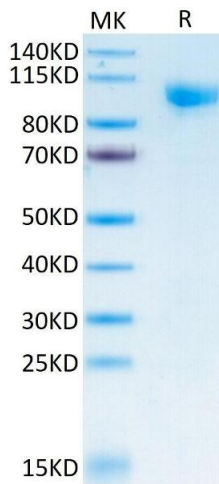
ELISA

Image 1. Immobilized Human Siglec-10 at 2 µg/mL (100 µL/Well) on the plate. Dose response curve for Biotinylated Anti-Siglec-10 Antibody, hFc Tag with the EC50 of 14.4 ng/mL determined by ELISA.



Size-exclusion chromatography-High Pressure Liquid Chromatography

Image 2. The purity of Human Siglec-10 is greater than 95 % as determined by SEC-HPLC.



SDS-PAGE

Image 3. Human Siglec-10 on Tris-Bis PAGE under reduced conditions. The purity is greater than 95 %