

Datasheet for ABIN7275614

SIGLEC15 Protein (AA 24-262) (His tag)[Go to Product page](#)**1** Image

Overview

Quantity:	100 µg
Target:	SIGLEC15
Protein Characteristics:	AA 24-262
Origin:	Mouse
Source:	HEK-293 Cells
Protein Type:	Recombinant
Purification tag / Conjugate:	This SIGLEC15 protein is labelled with His tag.

Product Details

Purpose:	Mouse Siglec-15/CD33L3 Protein
Sequence:	Arg24-Thr262
Characteristics:	Recombinant Mouse Siglec-15/CD33L3 Protein is expressed from HEK293 with His and Avi tag at the C-Terminus. It contains Arg24-Thr262.
Purity:	> 95 % as determined by Tris-Bis PAGE
Sterility:	0.22 µm filtered
Endotoxin Level:	Less than 1EU per µg by the LAL method.

Target Details

Target:	SIGLEC15
Alternative Name:	Siglec-15 (SIGLEC15 Products)

Target Details

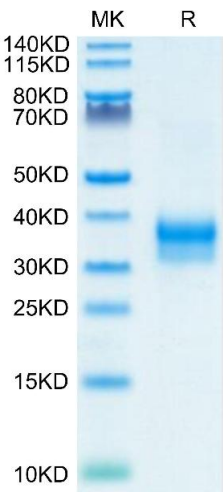
Background:	Siglec-15 is a transmembrane glycoprotein in the Siglec family of sialic acid-binding immune regulatory molecules. Mature human Siglec-15 consists of a 244 amino acid extracellular domain (ECD) with two Ig-like domains, a 21 aa transmembrane segment, and a 44 aa cytoplasmic domain. Siglec-15 is a potential therapeutic target for osteoporosis and plays a conserved regulatory role in the immune system of vertebrates.
Molecular Weight:	26.7 kDa. Due to glycosylation, the protein migrates to 30-40 kDa based on Tris-Bis PAGE result.

Application Details

Restrictions:	For Research Use only
---------------	-----------------------

Handling

Format:	Lyophilized
Reconstitution:	Centrifuge the tube before opening. Reconstituting to a concentration more than 100 µg/mL is recommended. Dissolve the lyophilized protein in distilled water.
Buffer:	Lyophilized from 0.22µm filtered solution in 20 mM PB, 0.5M NaCl, 0.1M L-arginine (pH 7.4). Normally 8 % trehalose is added as protectant before lyophilization.
Storage:	-20 °C,-80 °C
Storage Comment:	-20 to -80°C for 12 months as supplied from date of receipt.,-80°C for 3-6 months after reconstitution.,2-8°C for 2-7 days after reconstitution.,Recommend to aliquot the protein into smaller quantities for optimal storage. Please minimize freeze-thaw cycles.
Expiry Date:	12 months



SDS-PAGE

Image 1. Mouse Siglec-15 on Tris-Bis PAGE under reduced condition. The purity is greater than 95 % .