

Datasheet for ABIN7275619

SLAMF1 Protein (AA 21-237) (His tag)[Go to Product page](#)**2** Images

Overview

Quantity:	100 µg
Target:	SLAMF1
Protein Characteristics:	AA 21-237
Origin:	Human
Source:	HEK-293 Cells
Protein Type:	Recombinant
Purification tag / Conjugate:	This SLAMF1 protein is labelled with His tag.

Product Details

Purpose:	Human SLAMF1/SLAM/CD150 Protein
Sequence:	Ala21-Pro237
Characteristics:	Recombinant Human SLAMF1/SLAM/CD150 Protein is expressed from HEK293 with His tag at the C-Terminus. It contains Ala21-Pro237.
Purity:	> 95 % as determined by Tris-Bis PAGE, > 95 % as determined by HPLC
Sterility:	0.22 µm filtered
Endotoxin Level:	Less than 1EU per µg by the LAL method.

Target Details

Target:	SLAMF1
Alternative Name:	SLAMF1 (SLAMF1 Products)

Target Details

Background: The signaling lymphocytic activation molecule (SLAM) family is comprised of nine distinct receptors (SLAMF1 through SLAMF9) that are expressed on hematopoietic cells. The SLAM family receptor function is largely controlled via SLAM associated protein (SAP) family adaptors. The SAP family adaptors consist of SAP, Ewing sarcoma associated transcript (EAT)-2, and EAT-2-related transducer (ERT).

Molecular Weight: 25.4 kDa. Due to glycosylation, the protein migrates to 40-60 kDa based on Tris-Bis PAGE result.

Application Details

Restrictions: For Research Use only

Handling

Format: Lyophilized

Reconstitution: Centrifuge the tube before opening. Reconstituting to a concentration more than 100 µg/mL is recommended. Dissolve the lyophilized protein in distilled water.

Buffer: Lyophilized from 0.22µm filtered solution in PBS (pH 7.4). Normally 8 % trehalose is added as protectant before lyophilization.

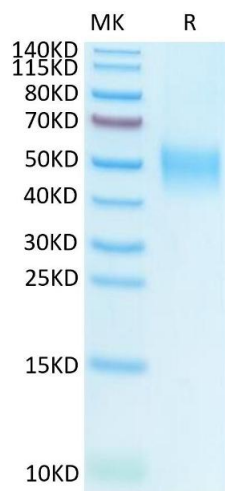
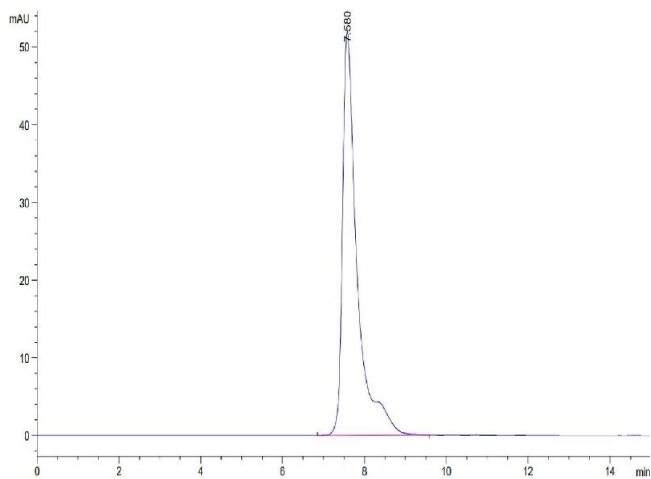
Storage: -20 °C,-80 °C

Storage Comment: -20 to -80°C for 12 months as supplied from date of receipt.,-80°C for 3-6 months after reconstitution.,2-8°C for 2-7 days after reconstitution.,Recommend to aliquot the protein into smaller quantities for optimal storage. Please minimize freeze-thaw cycles.

Expiry Date: 12 months

Size-exclusion chromatography-High Pressure Liquid Chromatography

Image 1. The purity of Human SLAMF1 is greater than 95 % as determined by SEC-HPLC.



SDS-PAGE

Image 2. Human SLAMF1 on Tris-Bis PAGE under reduced condition. The purity is greater than 95 % .