

Datasheet for ABIN7275622 SLAMF6 Protein (AA 22-226) (His-Avi Tag)

3 Images

[Go to Product page](#)

Overview

Quantity:	100 µg
Target:	SLAMF6
Protein Characteristics:	AA 22-226
Origin:	Human
Source:	HEK-293 Cells
Protein Type:	Recombinant
Purification tag / Conjugate:	This SLAMF6 protein is labelled with His-Avi Tag.

Product Details

Purpose:	Human SLAMF6/NTB-A Protein
Sequence:	Gln22-Met226
Characteristics:	Recombinant Human SLAMF6/NTB-A Protein is expressed from HEK293 with His tag and Avi tag at the C-Terminus.It contains Gln22-Met226.
Purity:	> 95 % as determined by Tris-Bis PAGE,> 95 % as determined by HPLC
Sterility:	0.22 µm filtered
Endotoxin Level:	Less than 1EU per µg by the LAL method.
Biological Activity Comment:	Immobilized Human SLAMF6, His Tag at 0.5µg/ml (100µl/well) on the plate. Dose response curve for Anti-SLAMF6 Antibody, hFc Tag with the EC50 of 7.9ng/ml determined by ELISA. See testing image for detail.

Target Details

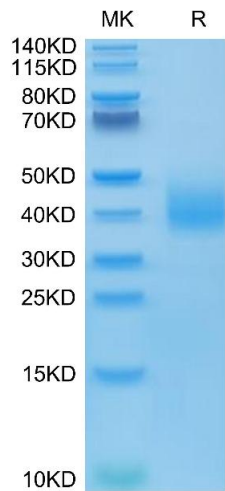
Target:	SLAMF6
Alternative Name:	SLAMF6 (SLAMF6 Products)
Background:	SLAMF6 (signaling lymphocyte activation molecule 6) (Ly108 in mice, NTB-A or SF2000 in humans) is a homophilic receptor belonging to the superfamily immunoglobulin (Ig) domain-containing molecules. It is known to be widely and exclusively expressed on hematopoietic cells. The SLAMF6 intracellular portion is characterized by two ITSMs that act as binding sites for adaptor molecules such as SAP and EAT-2.
Molecular Weight:	26 kDa. Due to glycosylation, the protein migrates to 35-50 kDa based on Tris-Bis PAGE result.

Application Details

Restrictions:	For Research Use only
---------------	-----------------------

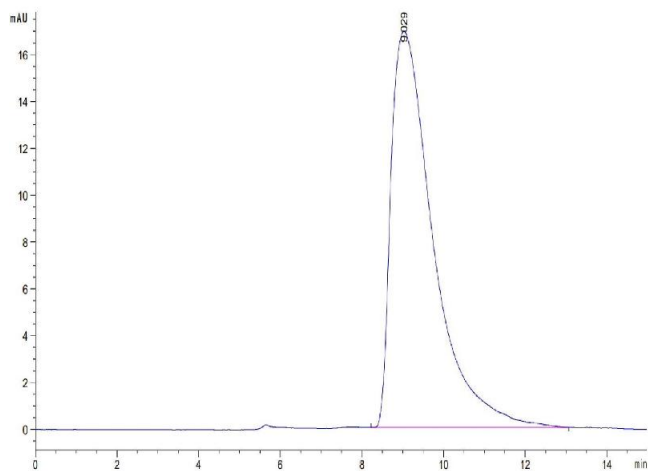
Handling

Format:	Lyophilized
Reconstitution:	Centrifuge the tube before opening. Reconstituting to a concentration more than 100 µg/mL is recommended. Dissolve the lyophilized protein in distilled water.
Buffer:	Lyophilized from 0.22µm filtered solution in PBS (pH 7.4). Normally 8 % trehalose is added as protectant before lyophilization.
Storage:	-20 °C,-80 °C
Storage Comment:	-20 to -80°C for 12 months as supplied from date of receipt.,-80°C for 3-6 months after reconstitution.,2-8°C for 2-7 days after reconstitution.,Recommend to aliquot the protein into smaller quantities for optimal storage. Please minimize freeze-thaw cycles.
Expiry Date:	12 months



SDS-PAGE

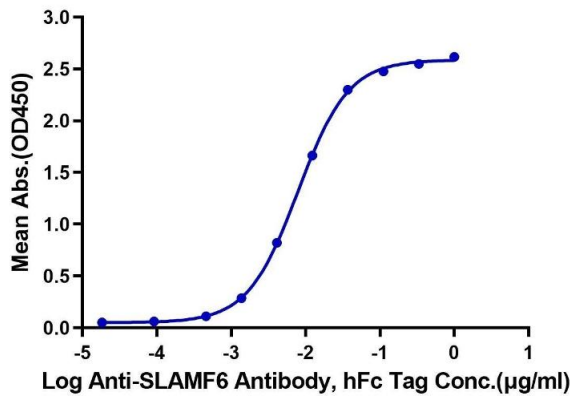
Image 1. Human SLAMF6 on Tris-Bis PAGE under reduced condition. The purity is greater than 95 % .



Size-exclusion chromatography-High Pressure Liquid Chromatography

Image 2. The purity of Human SLAMF6 is greater than 95 % as determined by SEC-HPLC.

Human SLAMF6, His Tag ELISA
0.05µg Human SLAMF6, His Tag Per Well



ELISA

Image 3. Immobilized Human SLAMF6, His Tag at 0.5 µg/mL (100 µL/well) on the plate. Dose response curve for Anti-SLAMF6 Antibody, hFc Tag with the EC50 of 7.9 ng/mL determined by ELISA.