

Datasheet for ABIN7275627
SLPI Protein (AA 26-132) (Fc Tag)

3 Images

[Go to Product page](#)

Overview

Quantity:	100 µg
Target:	SLPI
Protein Characteristics:	AA 26-132
Origin:	Human
Source:	HEK-293 Cells
Protein Type:	Recombinant
Purification tag / Conjugate:	This SLPI protein is labelled with Fc Tag.

Product Details

Purpose:	Human SLPI Protein
Sequence:	Ser26-Ala132
Characteristics:	Recombinant Human SLPI Protein is expressed from HEK293 with hFc tag at the C-Terminus. It contains Ser26-Ala132.
Purity:	> 95 % as determined by Tris-Bis PAGE, > 95 % as determined by HPLC
Sterility:	0.22 µm filtered
Endotoxin Level:	Less than 1EU per µg by the LAL method.
Biological Activity Comment:	Immobilized Human SLPI, hFc Tag at 2µg/ml (100µl/Well) on the plate. Dose response curve for Biotinylated Anti-SLPI Antibody, hFc Tag with the EC50 of 0.47µg/ml determined by ELISA. See testing image for detail.

Target Details

Target:	SLPI
Alternative Name:	SLPI (SLPI Products)
Background:	Elafin and SLPI (secretory leucocyte protease inhibitor) have multiple important roles both in normal homoeostasis and at sites of inflammation. These include antiprotease and antimicrobial activity as well as modulation of the response to LPS (lipopolysaccharide) stimulation. Elafin and SLPI are members of larger families of proteins secreted predominantly at mucosal sites, and have been shown to be modulated in multiple pathological conditions.
Molecular Weight:	38.5 kDa. Due to glycosylation, the protein migrates to 40-50 kDa based on Tris-Bis PAGE result.
UniProt:	P03973

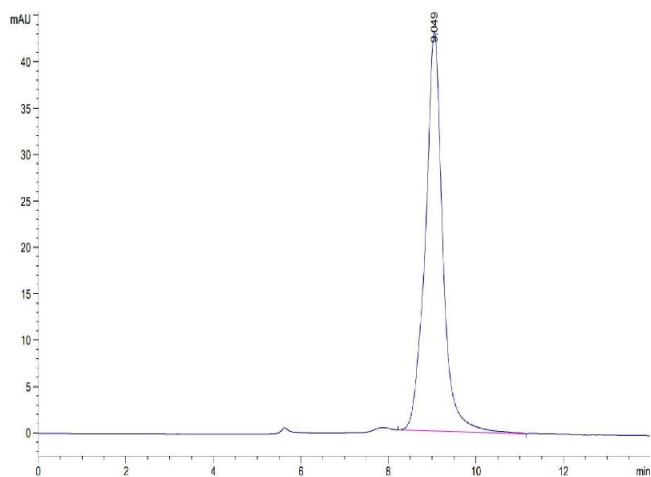
Application Details

Restrictions:	For Research Use only
---------------	-----------------------

Handling

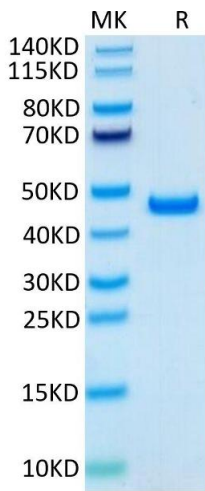
Format:	Liquid
Buffer:	Supplied as 0.22µm filtered solution in PBS, 350 mM NaCl (pH 7.4).
Storage:	-80 °C
Storage Comment:	Valid for 12 months from date of receipt when stored at -80°C., Recommend to aliquot the protein into smaller quantities for optimal storage. Please minimize freeze-thaw cycles.
Expiry Date:	12 months

Images



Size-exclusion chromatography-High Pressure Liquid Chromatography

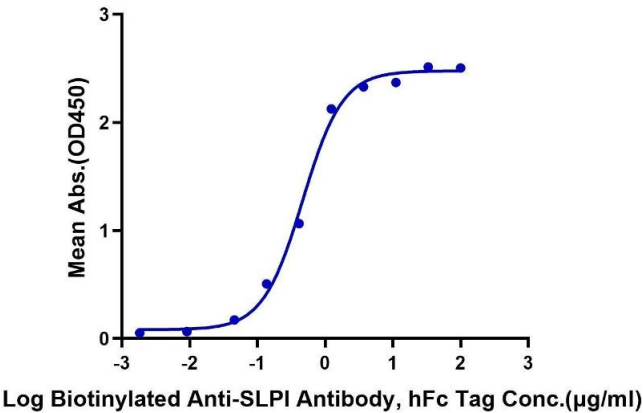
Image 1. The purity of Human SLPI is greater than 95 % as determined by SEC-HPLC.



SDS-PAGE

Image 2. Human SLPI on Tris-Bis PAGE under reduced condition. The purity is greater than 95 % .

Human SLPI, hFc Tag ELISA
0.2µg Human SLPI, hFc Tag Per Well



ELISA

Image 3. Immobilized Human SLPI, hFc Tag at 2 µg/mL (100 µL/Well) on the plate. Dose response curve for Biotinylated Anti-SLPI Antibody, hFc Tag with the EC50 of 0.47 µg/mL determined by ELISA.