

Datasheet for ABIN7275643

alpha 2 Antiplasmin Protein (AA 28-491) (His tag)**3** Images[Go to Product page](#)

Overview

Quantity:	100 µg
Target:	alpha 2 Antiplasmin (SERPINF2)
Protein Characteristics:	AA 28-491
Origin:	Human
Source:	HEK-293 Cells
Protein Type:	Recombinant
Purification tag / Conjugate:	This alpha 2 Antiplasmin protein is labelled with His tag.

Product Details

Purpose:	Human SERPINF2/A2AP Protein
Sequence:	Met28-Lys491
Characteristics:	Recombinant Human SERPINF2/A2AP Protein is expressed from HEK293 with His tag at the C-Terminus. It contains Met28-Lys491.
Purity:	> 95 % as determined by Tris-Bis PAGE, > 90 % as determined by HPLC
Sterility:	0.22 µm filtered
Endotoxin Level:	Less than 1EU per µg by the LAL method.
Biological Activity Comment:	Immobilized Human SERPINF2, His Tag at 0.5µg/ml (100µl/well) on the plate. Dose response curve for Anti-SERPINF2 Antibody, hFc Tag with the EC50 of 0.49µg/ml determined by ELISA. See testing image for detail.

Target Details

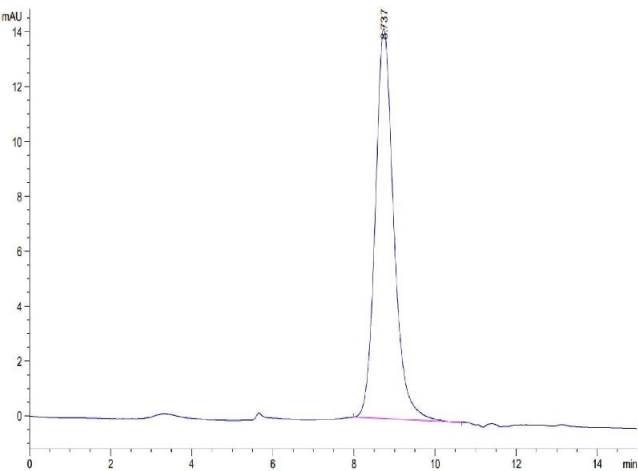
Target:	alpha 2 Antiplasmin (SERPINF2)
Alternative Name:	SERPINF2 (SERPINF2 Products)
Background:	Large-pool solvent/detergent (SD) plasma for transfusion exhibits reduced alpha 2-antiplasmin (alpha2-AP, SERPINF2) functional activity. The reason for the loss of alpha2-AP has not been described and could be due to the SD incubation itself and/or to the processing steps implemented to remove the solvent and the detergent.
Molecular Weight:	52.9 kDa. Due to glycosylation, the protein migrates to 60-70 kDa based on Tris-Bis PAGE result.
Pathways:	Regulation of Systemic Arterial Blood Pressure by Hormones

Application Details

Restrictions:	For Research Use only
---------------	-----------------------

Handling

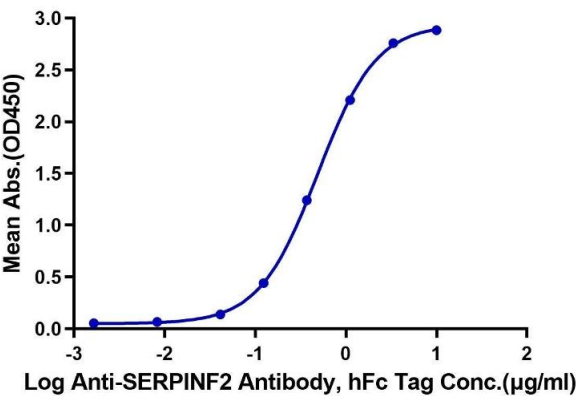
Format:	Lyophilized
Reconstitution:	Centrifuge the tube before opening. Reconstituting to a concentration more than 100 µg/mL is recommended. Dissolve the lyophilized protein in distilled water.
Buffer:	Lyophilized from 0.22µm filtered solution in PBS (pH 7.4). Normally 8 % trehalose is added as protectant before lyophilization.
Storage:	-20 °C,-80 °C
Storage Comment:	-20 to -80°C for 12 months as supplied from date of receipt.,-80°C for 3-6 months after reconstitution.,2-8°C for 2-7 days after reconstitution.,Recommend to aliquot the protein into smaller quantities for optimal storage. Please minimize freeze-thaw cycles.
Expiry Date:	12 months



Size-exclusion chromatography-High Pressure Liquid Chromatography

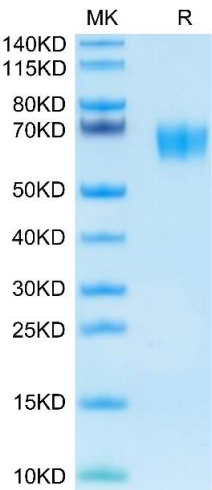
Image 1. The purity of Human SERPINF2 is greater than 95 % as determined by SEC-HPLC.

Human SERPINF2, His Tag ELISA
0.05µg Human SERPINF2, His Tag Per Well



ELISA

Image 2. Immobilized Human SERPINF2, His Tag at 0.5 µg/mL (100 µL/well) on the plate. Dose response curve for Anti-SERPINF2 Antibody, hFc Tag with the EC50 of 0.49 µg/mL determined by ELISA.



SDS-PAGE

Image 3. Human SERPINF2 on Tris-Bis PAGE under reduced condition. The purity is greater than 95 % .