

Datasheet for ABIN7275678

Syndecan 1 Protein (SDC1) (AA 23-254) (Fc Tag)**3** Images[Go to Product page](#)

Overview

Quantity:	100 µg
Target:	Syndecan 1 (SDC1)
Protein Characteristics:	AA 23-254
Origin:	Human
Source:	HEK-293 Cells
Protein Type:	Recombinant
Purification tag / Conjugate:	This Syndecan 1 protein is labelled with Fc Tag.

Product Details

Purpose:	Human Syndecan-1 Protein
Sequence:	Gln23-Gly254
Characteristics:	Recombinant Human Syndecan-1 Protein is expressed from HEK293 with hFc tag at the C-Terminus. It contains Gln23-Gly254.
Purity:	> 95 % as determined by Tris-Bis PAGE
Sterility:	0.22 µm filtered
Endotoxin Level:	Less than 1EU per µg by the LAL method.
Biological Activity Comment:	Immobilized Human Syndecan-1, hFc Tag at 1µg/ml (100µl/Well) on the plate. Dose response curve for Biotinylated Anti-Syndecan-1 Antibody, hFc Tag with the EC50 of 19.2ng/ml determined by ELISA. See testing image for detail.

Target Details

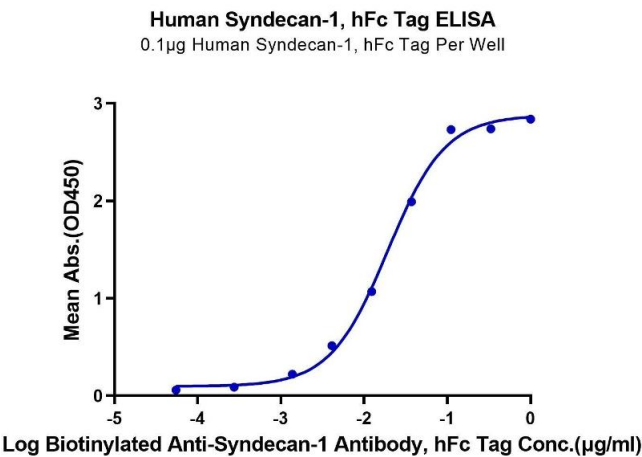
Target:	Syndecan 1 (SDC1)
Alternative Name:	Syndecan-1 (SDC1 Products)
Background:	<p>Liver diseases such as liver cirrhosis, primary and metastatic liver cancers are still a major medical challenge. Syndecan-1 is one of the most important proteoglycans in the liver.</p> <p>Syndecan-1 is normally expressed on the surfaces of hepatocytes and cholangiocytes. Due to liver diseases the amount of syndecan-1 increases in the liver.</p>
Molecular Weight:	50.6 kDa. Due to glycosylation, the protein migrates to 70-100 kDa based on Tris-Bis PAGE result.
Pathways:	Glycosaminoglycan Metabolic Process , Regulation of Muscle Cell Differentiation , Skeletal Muscle Fiber Development , Lipid Metabolism

Application Details

Restrictions:	For Research Use only
---------------	-----------------------

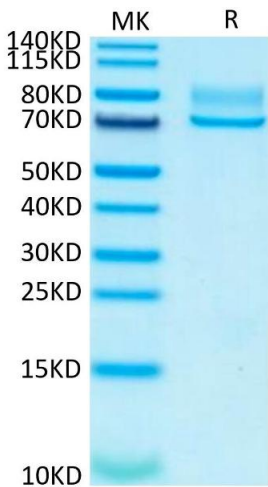
Handling

Format:	Lyophilized
Reconstitution:	Centrifuge the tube before opening. Reconstituting to a concentration more than 100 µg/mL is recommended. Dissolve the lyophilized protein in distilled water.
Buffer:	Lyophilized from 0.22µm filtered solution in PBS (pH 7.4). Normally 8 % trehalose is added as protectant before lyophilization.
Storage:	-20 °C,-80 °C
Storage Comment:	-20 to -80°C for 12 months as supplied from date of receipt., -80°C for 3-6 months after reconstitution., 2-8°C for 2-7 days after reconstitution., Recommend to aliquot the protein into smaller quantities for optimal storage. Please minimize freeze-thaw cycles.
Expiry Date:	12 months



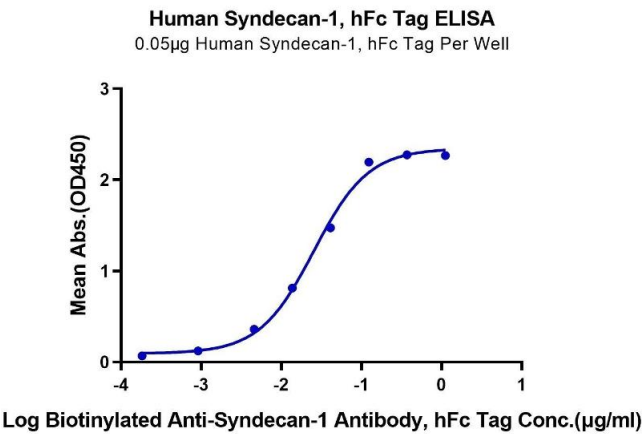
ELISA

Image 1. Immobilized Human Syndecan-1, hFc Tag at 1 µg/mL (100 µL/Well) on the plate. Dose response curve for Biotinylated Anti-Syndecan-1 Antibody, hFc Tag with the EC50 of 19.2 ng/mL determined by ELISA.



SDS-PAGE

Image 2. Human Syndecan-1 on Tris-Bis PAGE under reduced condition. The purity is greater than 95 % .



ELISA

Image 3. Immobilized Human Syndecan-1, hFc Tag at 0.5 µg/mL (100 µL/Well) on the plate. Dose response curve for Biotinylated Anti-Syndecan-1 Antibody, hFc Tag with the EC50 of 25.4 ng/mL determined by ELISA.