

Datasheet for ABIN7275679

Syndecan 1 Protein (SDC1) (AA 23-254) (His-Avi Tag,Biotin)[Go to Product page](#)**2** Images

Overview

| | |
|-------------------------------|--|
| Quantity: | 100 µg |
| Target: | Syndecan 1 (SDC1) |
| Protein Characteristics: | AA 23-254 |
| Origin: | Human |
| Source: | HEK-293 Cells |
| Protein Type: | Recombinant |
| Purification tag / Conjugate: | This Syndecan 1 protein is labelled with His-Avi Tag,Biotin. |

Product Details

| | |
|------------------------------|--|
| Purpose: | Biotinylated Human Syndecan-1 Protein |
| Sequence: | Gln23-Gly254 |
| Characteristics: | Recombinant Biotinylated Human Syndecan-1 Protein is expressed from HEK293 with His tag and Avi tag at the C-Terminus.It contains Gln23-Gly254. |
| Purity: | > 95 % as determined by Tris-Bis PAGE |
| Sterility: | 0.22 µm filtered |
| Endotoxin Level: | Less than 1EU per µg by the LAL method. |
| Biological Activity Comment: | Immobilized Biotinylated Human Syndecan-1, His Tag at 0.5µg/ml (100µl/Well) on the plate. Dose response curve for Anti-Syndecan-1 Antibody, hFc Tag with the EC50 of 21.3ng/ml determined by ELISA. See testing image for detail. |

Target Details

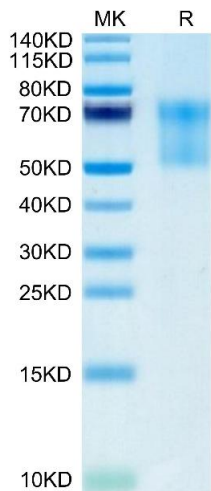
| | |
|-------------------|--|
| Target: | Syndecan 1 (SDC1) |
| Alternative Name: | Syndecan-1 (SDC1 Products) |
| Background: | <p>Liver diseases such as liver cirrhosis, primary and metastatic liver cancers are still a major medical challenge. Syndecan-1 is one of the most important proteoglycans in the liver.</p> <p>Syndecan-1 is normally expressed on the surfaces of hepatocytes and cholangiocytes. Due to liver diseases the amount of syndecan-1 increases in the liver.</p> |
| Molecular Weight: | 26.8 kDa. Due to glycosylation, the protein migrates to 50-70 kDa based on Tris-Bis PAGE result. |
| Pathways: | Glycosaminoglycan Metabolic Process , Regulation of Muscle Cell Differentiation , Skeletal Muscle Fiber Development , Lipid Metabolism |

Application Details

| | |
|---------------|-----------------------|
| Restrictions: | For Research Use only |
|---------------|-----------------------|

Handling

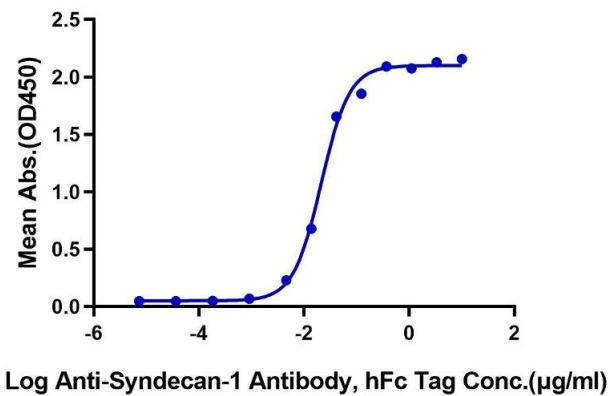
| | |
|------------------|--|
| Format: | Lyophilized |
| Reconstitution: | Centrifuge the tube before opening. Reconstituting to a concentration more than 100 µg/mL is recommended. Dissolve the lyophilized protein in distilled water. |
| Buffer: | Lyophilized from 0.22µm filtered solution in PBS (pH 7.4). Normally 8 % trehalose is added as protectant before lyophilization. |
| Storage: | -20 °C,-80 °C |
| Storage Comment: | -20 to -80°C for 12 months as supplied from date of receipt.,-80°C for 3-6 months after reconstitution.,2-8°C for 2-7 days after reconstitution.,Recommend to aliquot the protein into smaller quantities for optimal storage. Please minimize freeze-thaw cycles. |
| Expiry Date: | 12 months |



SDS-PAGE

Image 1. Biotinylated Human Syndecan-1 on Tris-Bis PAGE under reduced condition. The purity is greater than 95 % .

Biotinylated Human Syndecan-1, His Tag ELISA
0.05µg Biotinylated Human Syndecan-1, His Tag Per Well



ELISA

Image 2. Immobilized Biotinylated Human Syndecan-1, His Tag at 0.5 µg/mL (100 µL/Well) on the plate. Dose response curve for Anti-Syndecan-1 Antibody, hFc Tag with the EC50 of 21.3 ng/mL determined by ELISA.