

Datasheet for ABIN7275687

CD248 Protein (AA 18-687) (His tag)[Go to Product page](#)**4** Images

Overview

Quantity:	100 µg
Target:	CD248
Protein Characteristics:	AA 18-687
Origin:	Human
Source:	HEK-293 Cells
Protein Type:	Recombinant
Purification tag / Conjugate:	This CD248 protein is labelled with His tag.

Product Details

Purpose:	Human TEM1/cd248 Protein
Sequence:	Gln18-Leu687
Characteristics:	Recombinant Human TEM1/cd248 Protein is expressed from HEK293 with His tag at the C-Terminus. It contains Gln18-Leu687.
Purity:	> 95 % as determined by Tris-Bis PAGE, > 95 % as determined by HPLC
Sterility:	0.22 µm filtered
Endotoxin Level:	Less than 1EU per µg by the LAL method.
Biological Activity Comment:	Immobilized Human TEM1, His Tag at 0.5µg/ml (100µl/Well) on the plate. Dose response curve for Anti-TEM1 Antibody, hFc Tag with the EC50 of 5.2ng/ml determined by ELISA. See testing image for detail.

Target Details

Target:	CD248
Alternative Name:	TEM1 (CD248 Products)
Background:	Colorectal cancer (CRC) is one of the most common cancers worldwide usually diagnosed in the advanced stage. The serum concentration of tumor endothelial marker 1 (TEM1) was measured and correlated with clinicopathological features to evaluate whether TEM1 might serve as a biomarker for early CRC diagnosis, progression, and prognosis. TEM1 can act as a potential diagnostic, progression, and prognostic serum biomarker for patients with CRC, TEM1 might be a good supplement for commonly used markers CEA and Ca 19-9.
Molecular Weight:	72.7 kDa. Due to glycosylation, the protein migrates to 115-140 kDa based on Tris-Bis PAGE result.

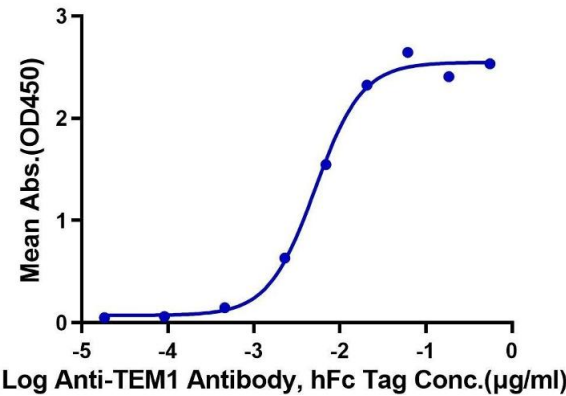
Application Details

Restrictions:	For Research Use only
---------------	-----------------------

Handling

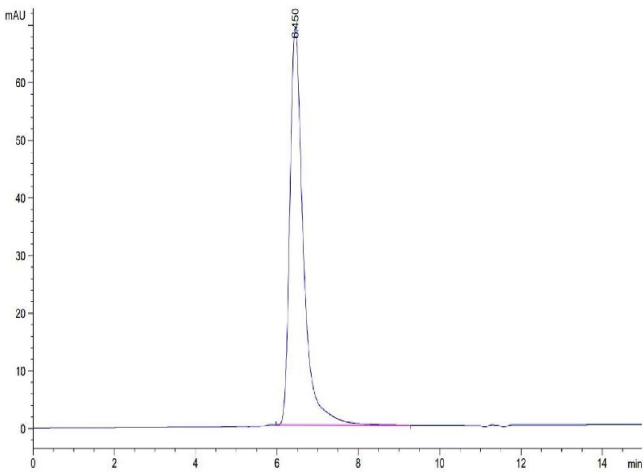
Format:	Lyophilized
Reconstitution:	Centrifuge the tube before opening. Reconstituting to a concentration more than 100 µg/mL is recommended. Dissolve the lyophilized protein in distilled water.
Buffer:	Lyophilized from 0.22µm filtered solution in PBS (pH 7.4). Normally 8 % trehalose is added as protectant before lyophilization.
Storage:	-20 °C,-80 °C
Storage Comment:	-20 to -80°C for 12 months as supplied from date of receipt.,-80°C for 3-6 months after reconstitution.,2-8°C for 2-7 days after reconstitution.,Recommend to aliquot the protein into smaller quantities for optimal storage. Please minimize freeze-thaw cycles.
Expiry Date:	12 months

Human TEM1, His Tag ELISA
0.05µg Human TEM1, His Tag Per Well



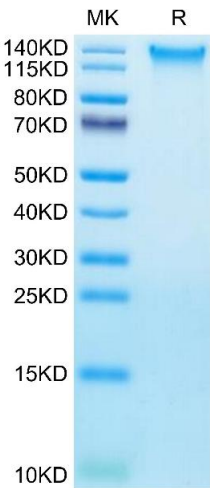
ELISA

Image 1. Immobilized Human TEM1, His Tag at 0.5 µg/mL (100 µL/Well) on the plate. Dose response curve for Anti-TEM1 Antibody, hFc Tag with the EC₅₀ of 5.2 ng/mL determined by ELISA.



Size-exclusion chromatography-High Pressure Liquid Chromatography

Image 2. The purity of Human TEM1 is greater than 95 % as determined by SEC-HPLC.



SDS-PAGE

Image 3. Human TEM1 on Tris-Bis PAGE under reduced condition. The purity is greater than 95 % .

Please check the [product details page](#) for more images. Overall 4 images are available for ABIN7275687.