

Datasheet for ABIN7275743

TK1 Protein (AA 2-242) (His tag)[Go to Product page](#)**1** Image

Overview

Quantity:	100 µg
Target:	TK1
Protein Characteristics:	AA 2-242
Origin:	Dog
Source:	Escherichia coli (E. coli)
Protein Type:	Recombinant
Purification tag / Conjugate:	This TK1 protein is labelled with His tag.

Product Details

Purpose:	Canine TK1 Potein
Sequence:	Ser2-Asn242
Characteristics:	Recombinant Canine TK1 Potein is expressed from E.coli with His tag at the C-Terminus.It contains Ser2-Asn242.
Purity:	> 95 % as determined by Tris-Bis PAGE
Sterility:	0.22 µm filtered
Endotoxin Level:	Less than 1EU per µg by the LAL method.

Target Details

Target:	TK1
Alternative Name:	TK1 (TK1 Products)

Target Details

Background:	Thymidine kinase 1 (TK1) catalyzes the initial phosphorylation of thymidine in the salvage pathway synthesis of dTTP, an essential building block of DNA. TK1 is a cytosolic enzyme with its highest level during the S-phase of the cell cycle.
Molecular Weight:	27.41 kDa. The protein migrates to 25-28 kDa based on Tris-Bis PAGE result.
UniProt:	E2QXP4

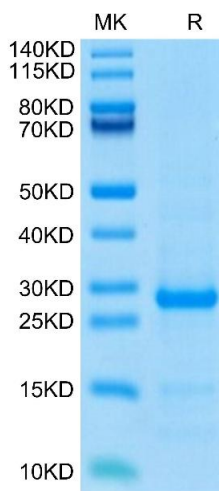
Application Details

Restrictions:	For Research Use only
---------------	-----------------------

Handling

Format:	Liquid
Buffer:	Supplied as 0.22µm filtered solution in 20 mM NaAc,150 mM NaCl (pH 5.0).
Storage:	-80 °C
Storage Comment:	Valid for 12 months from date of receipt when stored at -80°C.,Recommend to aliquot the protein into smaller quantities for optimal storage. Please minimize freeze-thaw cycles.
Expiry Date:	12 months

Images



SDS-PAGE

Image 1. Canine TK1 on Tris-Bis PAGE under reduced condition. The purity is greater than 95 % .