

Datasheet for ABIN727578
anti-IGBP1 antibody (AA 151-250)[2 Images](#)[1 Publication](#)[Go to Product page](#)

Overview

| | |
|----------------------|--|
| Quantity: | 100 µL |
| Target: | IGBP1 |
| Binding Specificity: | AA 151-250 |
| Reactivity: | Human, Mouse, Rat, Sheep |
| Host: | Rabbit |
| Clonality: | Polyclonal |
| Conjugate: | This IGBP1 antibody is un-conjugated |
| Application: | Western Blotting (WB), ELISA, Immunofluorescence (Cultured Cells) (IF (cc)), Immunofluorescence (Paraffin-embedded Sections) (IF (p)), Immunohistochemistry (Frozen Sections) (IHC (fro)), Immunohistochemistry (Paraffin-embedded Sections) (IHC (p)) |

Product Details

| | |
|-----------------------|---|
| Immunogen: | KLH conjugated synthetic peptide derived from human IGBP1 |
| Isotype: | IgG |
| Cross-Reactivity: | Human, Mouse, Rat, Sheep |
| Predicted Reactivity: | Cow,Pig,Guinea Pig |
| Purification: | Purified by Protein A. |

Target Details

| | |
|---------|-------|
| Target: | IGBP1 |
|---------|-------|

Target Details

| | |
|-------------------|--|
| Alternative Name: | IGBP1 (IGBP1 Products) |
| Background: | <p>Synonyms: IBP1, ALPHA-4, Immunoglobulin-binding protein 1, B-cell signal transduction molecule alpha 4, Protein alpha-4, CD79a-binding protein 1, Protein phosphatase 2/4/6 regulatory subunit, Renal carcinoma antigen NY-REN-16, IGBP1</p> <p>Background: Associated to surface IgM-receptor, may be involved in signal transduction. Involved in regulation of the catalytic activity of the phosphatases PP2A, PP4 and PP6 by protecting their partially folded catalytic subunits from degradative polyubiquitination until they associate with regulatory subunits.</p> |
| Gene ID: | 3476 |
| UniProt: | P78318 |

Application Details

| | |
|--------------------|---|
| Application Notes: | WB 1:300-5000 ELISA 1:500-1000 IHC-P 1:200-400 IHC-F 1:100-500 IF(IHC-P) 1:50-200 IF(IHC-F) 1:50-200 IF(ICC) 1:50-200 |
| Restrictions: | For Research Use only |

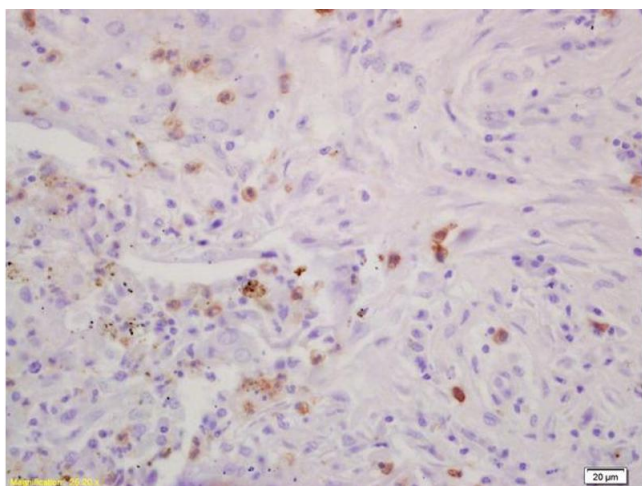
Handling

| | |
|--------------------|--|
| Format: | Liquid |
| Concentration: | 1 µg/µL |
| Buffer: | 0.01M TBS(pH 7.4) with 1 % BSA, 0.02 % Proclin300 and 50 % Glycerol. |
| Preservative: | ProClin |
| Precaution of Use: | This product contains ProClin: a POISONOUS AND HAZARDOUS SUBSTANCE, which should be handled by trained staff only. |
| Storage: | 4 °C, -20 °C |
| Storage Comment: | Shipped at 4°C. Store at -20°C for one year. Avoid repeated freeze/thaw cycles. |
| Expiry Date: | 12 months |

Publications

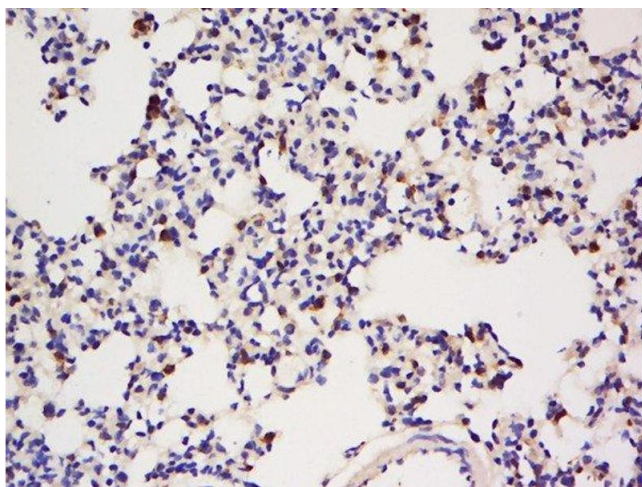
Product cited in: Luo, Wei, Wang, Wang: "Paternal bisphenol a diet changes prefrontal cortex proteome and provokes behavioral dysfunction in male offspring." in: **Chemosphere**, Vol. 184, pp. 720-729, (2017) ([PubMed](#)).

Images



Immunohistochemistry

Image 1. Formalin-fixed and paraffin embedded human lung carcinoma labeled with Rabbit Anti CD79A/IGBP-1 Polyclonal Antibody, Unconjugated (ABIN727578) at 1:200 followed by conjugation to the secondary antibody and DAB staining



Immunohistochemistry (Paraffin-embedded Sections)

Image 2. Formalin-fixed and paraffin embedded rat lung tissue labeled with Anti-IGBP1 Polyclonal Antibody, Unconjugated at 1:200 followed by conjugation to the secondary antibody and DAB staining.