



[Go to Product page](#)

Datasheet for ABIN727608

anti-Mesothelin antibody (AA 101-200)

5 Images

Overview

Quantity:	100 µL
Target:	Mesothelin (MSLN)
Binding Specificity:	AA 101-200
Reactivity:	Human
Host:	Rabbit
Clonality:	Polyclonal
Conjugate:	This Mesothelin antibody is un-conjugated
Application:	Western Blotting (WB), ELISA, Flow Cytometry (FACS), Immunohistochemistry (Paraffin-embedded Sections) (IHC (p))

Product Details

Immunogen:	KLH conjugated synthetic peptide derived from human Mesolin
Isotype:	IgG
Cross-Reactivity:	Human
Purification:	Purified by Protein A.

Target Details

Target:	Mesothelin (MSLN)
Alternative Name:	Mesothelin (MSLN Products)
Background:	Synonyms: MPF, SMRP, Mesothelin, CAK1 antigen, Pre-pro-megakaryocyte-potentiating factor,

Target Details

MSLN

Background: Membrane-anchored forms may play a role in cellular adhesion. Megakaryocyte-potentiating factor (MPF) potentiates megakaryocyte colony formation in vitro.

Gene ID: 10232

UniProt: [Q13421](#)

Pathways: [EGFR Signaling Pathway](#), [Positive Regulation of Peptide Hormone Secretion](#), [Intracellular Steroid Hormone Receptor Signaling Pathway](#), [Steroid Hormone Mediated Signaling Pathway](#), [Carbohydrate Homeostasis](#), [cAMP Metabolic Process](#), [Regulation of G-Protein Coupled Receptor Protein Signaling](#), [Positive Regulation of Endopeptidase Activity](#), [Regulation of Carbohydrate Metabolic Process](#)

Application Details

Application Notes: WB 1:300-5000
ELISA 1:500-1000
FCM 1:20-100
IHC-P 1:200-400

Restrictions: For Research Use only

Handling

Format: Liquid

Concentration: 1 µg/µL

Buffer: 0.01M TBS(pH 7.4) with 1 % BSA, 0.02 % Proclin300 and 50 % Glycerol.

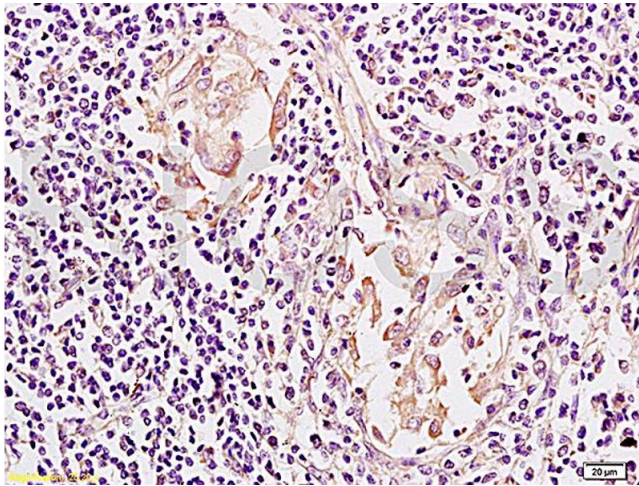
Preservative: ProClin

Precaution of Use: This product contains ProClin: a POISONOUS AND HAZARDOUS SUBSTANCE, which should be handled by trained staff only.

Storage: 4 °C, -20 °C

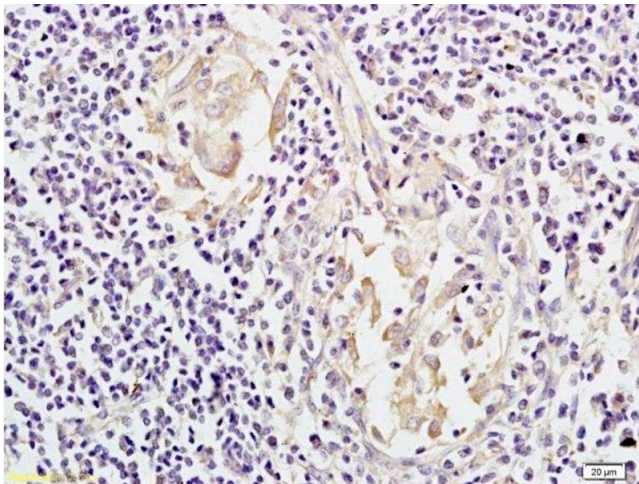
Storage Comment: Shipped at 4°C. Store at -20°C for one year. Avoid repeated freeze/thaw cycles.

Expiry Date: 12 months



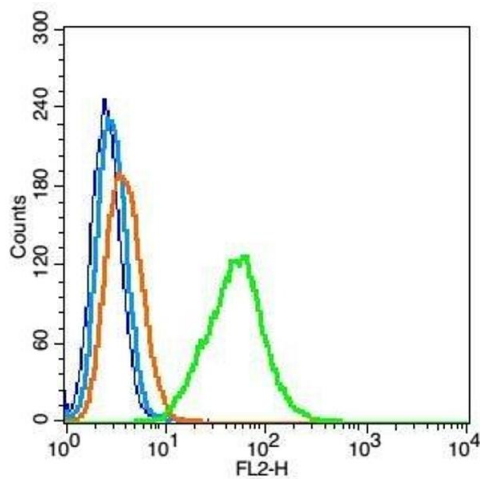
Immunohistochemistry

Image 1. Formalin-fixed and paraffin embedded: human colon carcinoma labeled with Anti-Mesothelin Polyclonal Antibody, Unconjugated (ABIN727608) at 1:200, followed by conjugation to the secondary antibody and DAB staining



Immunohistochemistry (Paraffin-embedded Sections)

Image 2. Formalin-fixed and paraffin embedded: human colon carcinoma labeled with Anti-Mesothelin Polyclonal Antibody, Unconjugated at 1:200, followed by conjugation to the secondary antibody and DAB staining



Flow Cytometry

Image 3. A549 probed with Mesothelin Polyclonal Antibody, Unconjugated) at 1:100 for 30 minutes followed by incubation with a conjugated secondary (PE Conjugated) (green) for 30 minutes compared to control cells (blue), secondary only (light blue) and isotype control (orange).

Please check the [product details page](#) for more images. Overall 5 images are available for ABIN727608.