

Datasheet for ABIN727800  
**anti-ILK antibody (AA 301-400)**[Go to Product page](#)

## 5 Images

## Overview

Quantity:	100 µL
Target:	ILK
Binding Specificity:	AA 301-400
Reactivity:	Human, Mouse, Rat
Host:	Rabbit
Clonality:	Polyclonal
Conjugate:	This ILK antibody is un-conjugated
Application:	Western Blotting (WB), ELISA, Immunofluorescence (Cultured Cells) (IF (cc)), Immunofluorescence (Paraffin-embedded Sections) (IF (p)), Immunohistochemistry (Paraffin-embedded Sections) (IHC (p)), Immunohistochemistry (Frozen Sections) (IHC (fro))

## Product Details

Immunogen:	KLH conjugated synthetic peptide derived from human ILK-1
Isotype:	IgG
Cross-Reactivity:	Human, Mouse, Rat
Predicted Reactivity:	Dog,Cow,Chicken
Purification:	Purified by Protein A.

## Target Details

Target:	ILK
---------	-----

## Target Details

Alternative Name:	ILK-1 ( <a href="#">ILK Products</a> )
Background:	<p>Synonyms: P59, ILK-1, ILK-2, p59ILK, HEL-S-28, Integrin-linked protein kinase, 59 kDa serine/threonine-protein kinase, ILK, ILK1, ILK2</p> <p>Background: Receptor-proximal protein kinase regulating integrin-mediated signal transduction. May act as a mediator of inside-out integrin signaling. Focal adhesion protein part of the complex ILK-PINCH. This complex is considered to be one of the convergence points of integrin- and growth factor-signaling pathway. Could be implicated in mediating cell architecture, adhesion to integrin substrates and anchorage-dependent growth in epithelial cells. Phosphorylates beta-1 and beta-3 integrin subunit on serine and threonine residues, but also AKT1 and GSK3B.</p>
Gene ID:	3611
UniProt:	<a href="#">Q13418</a>
Pathways:	<a href="#">Regulation of Muscle Cell Differentiation</a> , <a href="#">Regulation of Cell Size</a> , <a href="#">Maintenance of Protein Location</a> , <a href="#">Skeletal Muscle Fiber Development</a> , <a href="#">Smooth Muscle Cell Migration</a>

## Application Details

Application Notes:	WB 1:300-5000 ELISA 1:500-1000 IHC-P 1:200-400 IHC-F 1:100-500 IF(IHC-P) 1:50-200 IF(IHC-F) 1:50-200 IF(ICC) 1:50-200
Restrictions:	For Research Use only

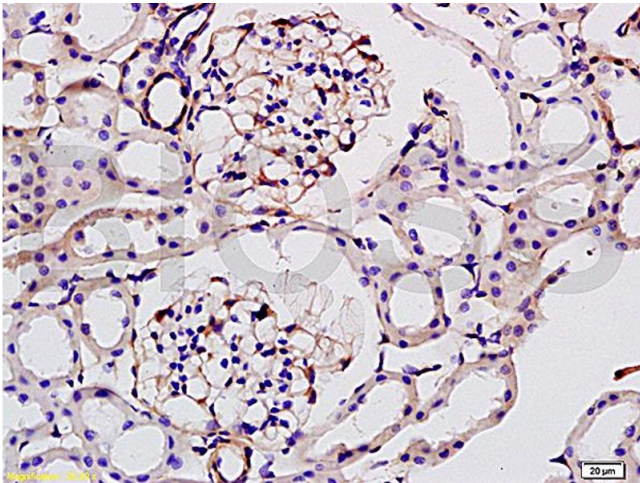
## Handling

Format:	Liquid
Concentration:	1 µg/µL
Buffer:	0.01M TBS( pH 7.4) with 1 % BSA, 0.02 % Proclin300 and 50 % Glycerol.
Preservative:	ProClin
Precaution of Use:	This product contains ProClin: a POISONOUS AND HAZARDOUS SUBSTANCE, which should be handled by trained staff only.

Handling

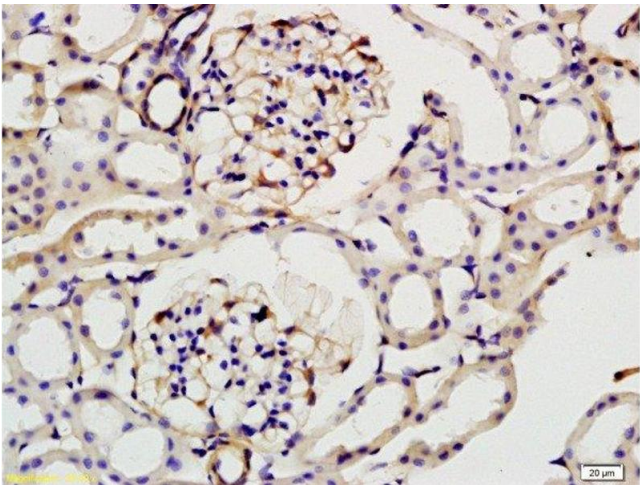
Storage:	4 °C,-20 °C
Storage Comment:	Shipped at 4°C. Store at -20°C for one year. Avoid repeated freeze/thaw cycles.
Expiry Date:	12 months

Images



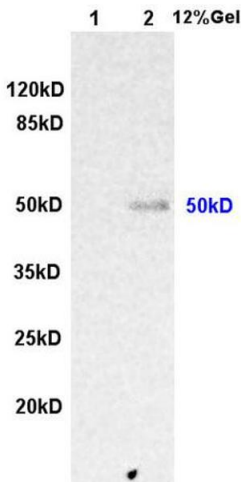
Immunohistochemistry

**Image 1.** Formalin-fixed and paraffin embedded: rat kidney tissue labeled with Anti-ILK-1 Polyclonal Antibody (ABIN727800), Unconjugated at 1:200, followed by conjugation to the secondary antibody and DAB staining



Immunohistochemistry (Paraffin-embedded Sections)

**Image 2.** Formalin-fixed and paraffin embedded: rat kidney tissue labeled with Anti-ILK-1 Polyclonal Antibody , Unconjugated at 1:200, followed by conjugation to the secondary antibody and DAB staining



SDS-PAGE

**Image 3.** L1 rat kidney lysates L2 human colon carcinoma lysates probed with Anti ILK-1 Polyclonal Antibody, Unconjugated (ABIN727800) at 1:200 overnight at 4 °C. Followed by conjugation to secondary antibody at 1:3000 for 90 min at 37 °C. Predicted band 50kD. Observed band size:50kD.

## Images

---

Please check the [product details page](#) for more images. Overall 5 images are available for ABIN727800.