

Datasheet for ABIN7278026

**anti-Fc epsilon RI/FCER1A antibody (APC)**[Go to Product page](#)**1** Image

## Overview

Quantity:	100 µg
Target:	Fc epsilon RI/FCER1A (FCER1A)
Reactivity:	Mouse
Host:	Armenian Hamster
Clonality:	Monoclonal
Conjugate:	This Fc epsilon RI/FCER1A antibody is conjugated to APC
Application:	Flow Cytometry (FACS)

## Product Details

Clone:	MAR-1
Isotype:	IgG
Purification:	This monoclonal antibody was purified from tissue culture supernatant via affinity chromatography. The purified antibody was conjugated under optimal conditions, with unreacted dye removed from the preparation. It is recommended to store the product undiluted at 4°C, and protected from prolonged exposure to light. Do not freeze.

## Target Details

Target:	Fc epsilon RI/FCER1A (FCER1A)
Alternative Name:	FceR1 ( <a href="#">FCER1A Products</a> )
Background:	The MAR-1 antibody reacts with the Fc epsilon Receptor I alpha chain (FceR1a), a transmembrane protein member of the Ig superfamily. This chain, together with a beta chain

## Target Details

and two gamma chains form a tetrameric complex that supports IgE-mediated signaling and subsequent release of chemical mediators of allergy and immediate hypersensitivity. FcεR1a is upregulated in the presence of IgE on those cell types which express it, such as Mast cells and Basophils. The MAR-1 antibody is widely used both in flow cytometry and for depletion of cells in vitro / in vivo.

Gene ID: 2205

UniProt: [P20489](#)

Pathways: [Fc-epsilon Receptor Signaling Pathway](#), [Regulation of Leukocyte Mediated Immunity](#), [Positive Regulation of Immune Effector Process](#)

## Application Details

Application Notes: This antibody preparation has been quality-tested for flow cytometry using mouse spleen cells, or an appropriate cell type (where indicated). Please refer to the figure legend for the optimal concentration used to stain the tissue shown. We recommend titrating the antibody under your specific conditions to determine the optimal concentration of antibody needed in your experimental system.

Comment: 0.2 mg/mL

Restrictions: For Research Use only

## Handling

Buffer: 10 mM NaH<sub>2</sub>PO<sub>4</sub>, 150 mM NaCl, 0.09 % Sodium azide, 0.1 % gelatin, pH 7.2

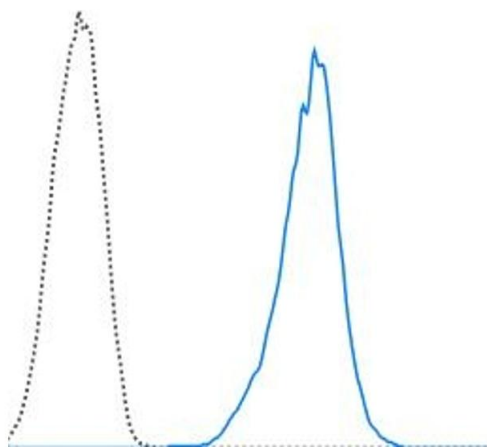
Preservative: Sodium azide

Precaution of Use: This product contains Sodium azide: a POISONOUS AND HAZARDOUS SUBSTANCE which should be handled by trained staff only.

Storage: 4 °C

Storage Comment: 2-8°C protected from light

Expiry Date: 12 months



### Flow Cytometry

**Image 1.** MC/9 (mouse mast cell line) cells were stained with 0.06  $\mu$ g PE Anti-Mouse Fc epsilon Receptor I alpha (ABIN6961264) (solid line) or 0.06  $\mu$ g PE Armenian Hamster IgG isotype control (dashed line).