

Datasheet for ABIN7278029
anti-Ly6g antibody (APC)

2 Images



[Go to Product page](#)

Overview

Quantity:	100 µg
Target:	Ly6g
Reactivity:	Mouse
Host:	Rat
Clonality:	Monoclonal
Conjugate:	This Ly6g antibody is conjugated to APC
Application:	Flow Cytometry (FACS)

Product Details

Clone:	RB6-8C5
Isotype:	IgG2b kappa
Purification:	This monoclonal antibody was purified from tissue culture supernatant via affinity chromatography. The purified antibody was conjugated under optimal conditions, with unreacted dye removed from the preparation. It is recommended to store the product undiluted at 4°C, and protected from prolonged exposure to light. Do not freeze.

Target Details

Target:	Ly6g
Alternative Name:	Ly-6G (Gr-1) (Ly6g Products)
Background:	The RB6-8C5 antibody binds to mouse Ly-6G, commonly known as Gr-1, a member of the Ly-6 superfamily of GPI-anchored cell surface proteins with roles in cell signaling and cell adhesion.

Target Details

Gr-1 is differentially expressed during development and maturation of cells in the myeloid lineage and is expression at varying stages and levels on monocytes, macrophages, granulocytes, and peripheral neutrophils. In the mouse, the RB6-8C5 antibody is typically used in combination with the macrophage labeling antibody M1/70 (Anti-CD11b) for phe- notypic analysis of monocytes, macrophages and granulocytes. Note: The RB6-8C5 antibody has been reported to cross-react with Ly-6C on cells expressing this antigen (Fleming et al. 1993. J. Immunol. 151:2399-2408 and Sasmono et al. 2007. J. Leukoc. Biol. 82: 111-123) and has been cited in the literature for identification of Ly-6G/Ly-6C. Other reports suggest that this antibody is specific for Ly-6G, without cross-reactivity for Ly-6C (Nagendra S. and Schlueter AJ. 2003. Cytometry A, 58(2): 195-200.

Gene ID: 17067, 100041546, 546644

UniProt: [P0CW02](#), [P0CW03](#)

Application Details

Application Notes: This antibody preparation has been quality-tested for flow cytometry using mouse spleen cells, or an appropriate cell type (where indicated). The amount of antibody required for optimal staining of a cell sample should be determined empirically in your system.

Comment: 0.2 mg/mL

Restrictions: For Research Use only

Handling

Buffer: 10 mM NaH₂PO₄, 150 mM NaCl, 0.09 % Sodium azide, 0.1 % gelatin, pH 7.2

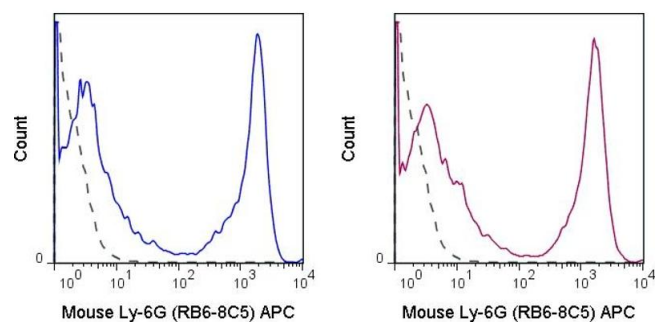
Preservative: Sodium azide

Precaution of Use: This product contains Sodium azide: a POISONOUS AND HAZARDOUS SUBSTANCE which should be handled by trained staff only.

Storage: 4 °C

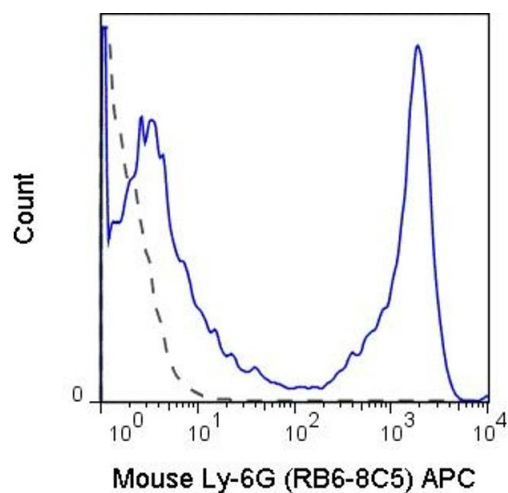
Storage Comment: 2-8°C protected from light

Expiry Date: 12 months



Flow Cytometry

Image 1. C57Bl/6 bone marrow cells were stained with 0.125 µg APC Anti-Mouse Ly-6G (RB6-8C5) manufactured by antibodies-online (left panel) or eBioscience (right panel).



Flow Cytometry

Image 2. C57Bl/6 bone marrow cells were stained with 0.125 µg APC Anti-Mouse Ly-6G (ABIN6961267) (solid line) or 0.125 µg APC Rat IgG2b isotype control (dashed line).