

Datasheet for ABIN7278222
anti-TCR beta antibody (FITC)[Go to Product page](#)

1 Image

Overview

Quantity:	100 µg
Target:	TCR beta
Reactivity:	Mouse
Host:	Armenian Hamster
Clonality:	Monoclonal
Conjugate:	This TCR beta antibody is conjugated to FITC
Application:	Flow Cytometry (FACS)

Product Details

Clone:	H57-597
Isotype:	IgG
Purification:	This monoclonal antibody was purified from tissue culture supernatant via affinity chromatography. The purified antibody was conjugated under optimal conditions, with unreacted dye removed from the preparation. It is recommended to store the product undiluted at 4°C, and protected from prolonged exposure to light. Do not freeze.

Target Details

Target:	TCR beta
Alternative Name:	TCR beta (TCR beta Products)
Background:	The H57-597 antibody is specific for the beta chain of the mouse T cell Receptor (TCR). This cell surface protein combines with a second protein chain (alpha chain) to form the alpha-beta

Target Details

TCR that is expressed by NK1.1+ thymocytes, NKT cells, and the majority of peripheral T cells. A small number of T cells may express an alternative heteromer of gamma and delta protein chains, known as the gamma-delta TCR. These receptors participate in a complex with CD3, and with the co-receptors CD4 or CD8, to recognize and respond to antigens bound to MHC molecules on antigen-presenting cells. Such interactions promote T cell receptor signaling (T cell activation) and can result in a number of cellular responses including proliferation, differentiation, production of cytokines or activation-induced cell death. The H57-597 antibody is used as a phenotypic marker for T cells expressing the alpha-beta TCR. It is also widely used to cross-link surface TCR and thereby mimic TCR-mediated cell activation or induction of apoptosis. The antibody does not cross-react with cells expressing the gamma-delta TCR.

Gene ID: 21577

Application Details

Application Notes: This antibody preparation has been quality-tested for flow cytometry using mouse spleen cells, or an appropriate cell type (where indicated). The amount of antibody required for optimal staining of a cell sample should be determined empirically in your system.

Comment: 0.5 mg/mL 0 100 101 102 103 104 Mouse TCR beta (H57-597) FITC

Restrictions: For Research Use only

Handling

Buffer: 10 mM NaH₂PO₄, 150 mM NaCl, 0.09 % Sodium azide, 0.1 % gelatin, pH 7.2

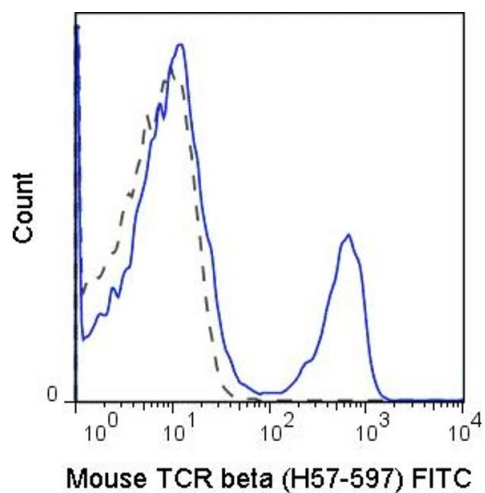
Preservative: Sodium azide

Precaution of Use: This product contains Sodium azide: a POISONOUS AND HAZARDOUS SUBSTANCE which should be handled by trained staff only.

Storage: 4 °C

Storage Comment: 2-8°C protected from light

Expiry Date: 12 months



Flow Cytometry

Image 1. C57Bl/6 splenocytes were stained with 0.25 μ g Anti-Mouse TCR beta FITC (ABIN6961422) (solid line) or 0.25 μ g Armenian hamster IgG FITC isotype control (dashed line).