

Datasheet for ABIN727875
anti-C5 antibody (AA 701-755)

3 Images

1 Publication

[Go to Product page](#)

Overview

Quantity:	100 µL
Target:	C5
Binding Specificity:	AA 701-755
Reactivity:	Human, Mouse
Host:	Rabbit
Clonality:	Polyclonal
Conjugate:	This C5 antibody is un-conjugated
Application:	Western Blotting (WB), ELISA, Immunofluorescence (Paraffin-embedded Sections) (IF (p)), Immunofluorescence (Cultured Cells) (IF (cc)), Immunohistochemistry (Paraffin-embedded Sections) (IHC (p))

Product Details

Immunogen:	KLH conjugated synthetic peptide derived from mouse C5a (725-770aa)
Isotype:	IgG
Cross-Reactivity:	Human, Mouse
Predicted Reactivity:	Rat
Purification:	Purified by Protein A.

Target Details

Target:	C5
---------	----

Target Details

Alternative Name:	C5a anaphylatoxin (C5 Products)
Background:	<p>Synonyms: C5, He, C5a, Complement C5, Hemolytic complement, Hc</p> <p>Background: Activation of C5 by a C5 convertase initiates the spontaneous assembly of the late complement components, C5-C9, into the membrane attack complex. C5b has a transient binding site for C6. The C5b-C6 complex is the foundation upon which the lytic complex is assembled. Derived from proteolytic degradation of complement C5, C5 anaphylatoxin is a mediator of local inflammatory process. Binding to the receptor C5AR1 induces a variety of responses including intracellular calcium release, contraction of smooth muscle, increased vascular permeability, and histamine release from mast cells and basophilic leukocytes. C5a is also a potent chemokine which stimulates the locomotion of polymorphonuclear leukocytes and directs their migration toward sites of inflammation.</p>
Gene ID:	15139
UniProt:	P06684
Pathways:	Complement System , Carbohydrate Homeostasis

Application Details

Application Notes:	WB 1:300-5000 ELISA 1:500-1000 IHC-P 1:200-400 IF(IHC-P) 1:50-200 IF(IHC-F) 1:50-200 IF(ICC) 1:50-200
Restrictions:	For Research Use only

Handling

Format:	Liquid
Concentration:	1 µg/µL
Buffer:	0.01M TBS(pH 7.4) with 1 % BSA, 0.02 % Proclin300 and 50 % Glycerol.
Preservative:	ProClin
Precaution of Use:	This product contains ProClin: a POISONOUS AND HAZARDOUS SUBSTANCE, which should be handled by trained staff only.

Handling

Storage: 4 °C, -20 °C

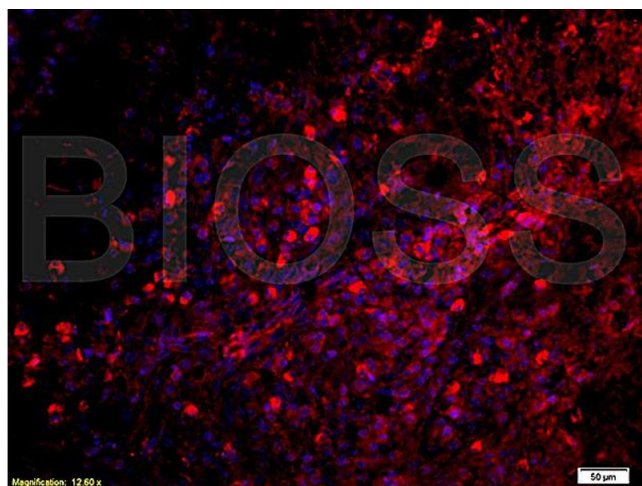
Storage Comment: Shipped at 4°C. Store at -20°C for one year. Avoid repeated freeze/thaw cycles.

Expiry Date: 12 months

Publications

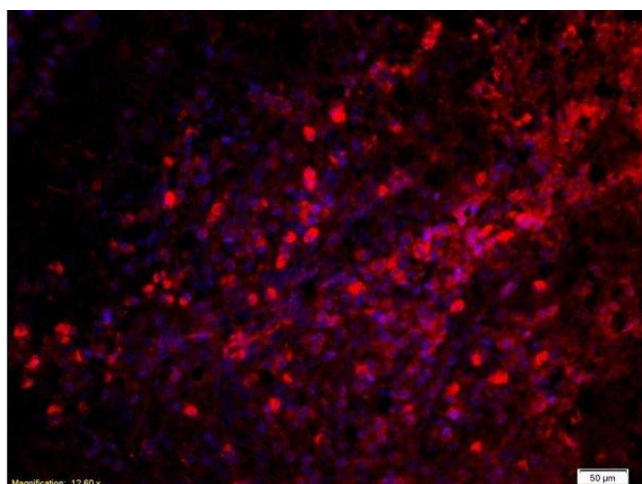
Product cited in: Miyabe, Miyabe, Murooka, Kim, Newton, Kim, Haribabu, Luscinskas, Mempel, Luster: "Complement C5a Receptor is the Key Initiator of Neutrophil Adhesion Igniting Immune Complex-induced Arthritis." in: **Science immunology**, Vol. 2, Issue 7, (2017) ([PubMed](#)).

Images



Immunofluorescence

Image 1. Formalin-fixed and paraffin embedded: Human laryngeal carcinoma labeled with Anti-C5a Polyclonal Antibody (ABIN727875), Unconjugated at 1:200, followed by conjugation to the secondary antibody was Goat Anti-Rabbit IgG, PE conjugated at 1:200 for 40 minutes at 37°C



Immunohistochemistry (Paraffin-embedded Sections)

Image 2. Formalin-fixed and paraffin embedded: Human laryngeal carcinoma labeled with Anti-C5a Polyclonal Antibody, Unconjugated at 1:200, followed by conjugation to the secondary antibody was Goat Anti-Rabbit IgG, PE conjugated -PE) at 1:200 for 40 minutes at 37°C

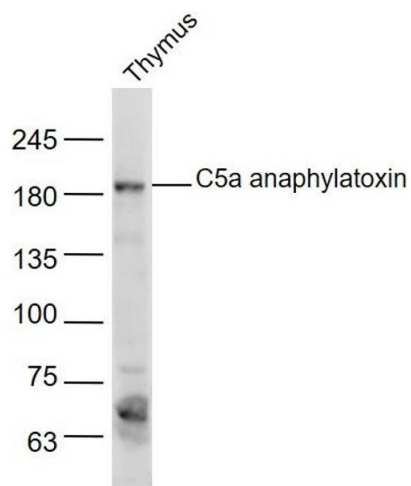


Image 3. Mouse thymus lysate probed with C5a anaphylatoxin Polyclonal Antibody, Unconjugated at 1:300 dilution and 4°C overnight incubation. Followed by conjugated secondary antibody incubation at 1:10000 for 60 min at 37°C.