



[Go to Product page](#)

Datasheet for ABIN7279205

MGLL Protein (AA 1-313) (His tag)

1 Image

Overview

Quantity:	100 µg
Target:	MGLL
Protein Characteristics:	AA 1-313
Origin:	Human
Source:	Escherichia coli (E. coli)
Protein Type:	Recombinant
Purification tag / Conjugate:	This MGLL protein is labelled with His tag.
Application:	SDS-PAGE (SDS)

Product Details

Characteristics:	MGLL, 1-313aa, Human, His tag, E.coli
Purity:	> 85 % by SDS - PAGE

Target Details

Target:	MGLL
Alternative Name:	MGLL (MGLL Products)
Background:	MGLL is membrane-associated member of the serine hydrolase superfamily. MGLL functions together with hormone-sensitive lipase (LIPE) to hydrolyze intracellular triglyceride stores in adipocytes and other cells to fatty acids and glycerol. MGLL may also complement lipoprotein lipase (LPL) in completing hydrolysis of monoglycerides resulting from degradation of lipoprotein triglycerides. It is most abundantly expressed in skeletal muscle and adipose tissue.

Target Details

Recombinant human MGLL protein, fused to His-tag at N-terminus, was expressed in E.coli and purified by using conventional chromatography. Synonyms: Monoglyceride lipase, HU-K5, HUK5, MAGL, MGL, Lysophospholipase homolog, Lysophospholipase-like. NCBI no.: NP_009214

Molecular Weight: 36.4 kDa(333aa), confirmed by MALDI-TOF

Pathways: [Regulation of G-Protein Coupled Receptor Protein Signaling](#), [Lipid Metabolism](#)

Application Details

Restrictions: For Research Use only

Handling

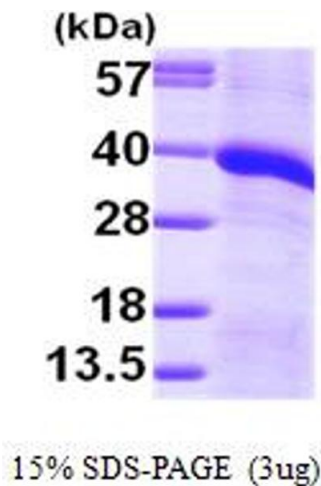
Format: Liquid

Concentration: 0.5 mg/ml (determined by Bradford assay)

Buffer: Liquid. In 20 mM Tris-HCl Buffer (pH 8.0) containing 10% Glycerol

Storage: 4 °C

Images



SDS-PAGE

Image 1.