

Datasheet for ABIN7279232

SAA4 Protein (AA 21-130) (His tag)[Go to Product page](#)**1** Image

Overview

Quantity:	100 µg
Target:	SAA4
Protein Characteristics:	AA 21-130
Origin:	Human
Source:	Escherichia coli (E. coli)
Protein Type:	Recombinant
Purification tag / Conjugate:	This SAA4 protein is labelled with His tag.
Application:	SDS-PAGE (SDS)

Product Details

Characteristics:	SAA4, 21-130aa, Human, His tag, E.coli
Purity:	> 90 % by SDS – PAGE

Target Details

Target:	SAA4
Alternative Name:	SAA4 (SAA4 Products)
Background:	SAA4 is a constitutively expressed protein belonging to the SAA family. It is a major acute phase reactant and an apolipoprotein of the HDL complex. SAA4 is constitutively expressed only in humans and mice, is associated almost entirely with lipoproteins of the high density range. Its physiological function is unknown and its serum concentration has no relationship with those of other major apolipoproteins. The presence of SAA4 mRNA and protein in

Target Details

macrophage derived foam cells of coronary and carotid arteries suggested a specific role of human SAA4 during inflammation including atherosclerosis. Recombinant human SAA4 protein, fused to His-tag at N-terminus, was expressed in E.coli and purified by using conventional chromatography techniques. Synonyms: Serum amyloid A-4 protein , C-SAA, CSA. NCBI no.: NP_006503

Molecular Weight: 14.9 kDa (131aa) confirmed by MALDI-TOF

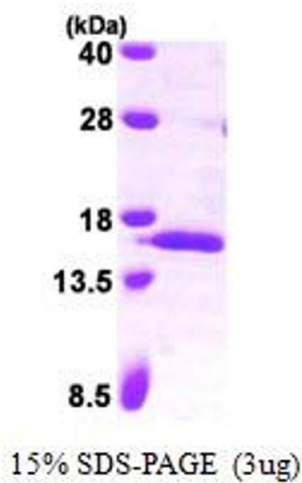
Application Details

Restrictions: For Research Use only

Handling

Format:	Liquid
Concentration:	0.5 mg/ml (determined by Bradford assay)
Buffer:	Liquid. In 20mM Tris-HCl buffer(pH 8.0) containing 20% glycerol, 5mM DTT, 0.2M NaCl, 0.5mM EDTA.
Storage:	4 °C

Images



SDS-PAGE

Image 1.