

Datasheet for ABIN7279235
tau Protein (AA 1-383) (His tag)[Go to Product page](#)

1 Image

Overview

Quantity:	100 µg
Target:	tau
Protein Characteristics:	AA 1-383
Origin:	Human
Source:	Escherichia coli (E. coli)
Protein Type:	Recombinant
Purification tag / Conjugate:	This tau protein is labelled with His tag.
Application:	SDS-PAGE (SDS)

Product Details

Characteristics:	TAU, 1-383aa, Human, His tag, E.coli
Purity:	> 90 % by SDS - PAGE

Target Details

Target:	tau
Alternative Name:	tau (tau Products)
Background:	<p>Tau, also known as microtubule-associated protein tau (MAPT), is a protein that stabilizes microtubules. It is abundant in neurons in the central nervous system and is less common elsewhere. When this protein is defective, and no longer stabilizes microtubules properly, it can result in dementias, such as Alzheimer's disease. Recombinant human Tau protein, fused to His-tag at N-terminus, was expressed in E.coli and purified by using conventional</p>

Target Details

	chromatography. Synonyms: Microtubule-associated protein tau isoform 3, MAPT, DDPAC, FLJ31424, FTDP-17, MAPTL, MGC138549, MSTD, MTBT1, MTBT2, PPN. NCBI no.: NP_058518
Molecular Weight:	42.1 kDa (403aa) confirmed by MALDI-TOF (molecular weight on SDS-PAGE will appear higher)

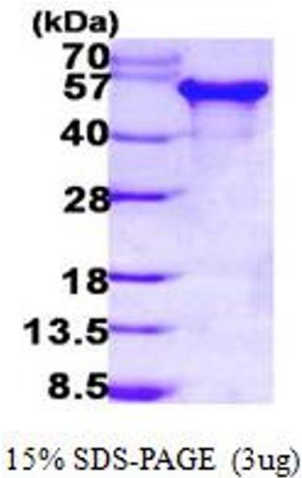
Application Details

Restrictions:	For Research Use only
---------------	-----------------------

Handling

Format:	Liquid
Concentration:	1.0 mg/ml (determined by Bradford assay)
Buffer:	Liquid. 20mM Tris-HCl buffer (pH8.0) containing 10% glycerol, 0.1M NaCl
Storage:	4 °C

Images



SDS-PAGE

Image 1.