

Datasheet for ABIN7279332  
**RPS14 Protein (AA 1-151) (His tag)**



[Go to Product page](#)

1 Image

## Overview

Quantity:	100 µg
Target:	RPS14
Protein Characteristics:	AA 1-151
Origin:	Human
Source:	Escherichia coli (E. coli)
Protein Type:	Recombinant
Purification tag / Conjugate:	This RPS14 protein is labelled with His tag.
Application:	SDS-PAGE (SDS)

## Product Details

Characteristics:	RPS14, 1-151aa, Human, His tag, E.coli
Purity:	> 80 % by SDS - PAGE

## Target Details

Target:	RPS14
Alternative Name:	RPS14 ( <a href="#">RPS14 Products</a> )
Background:	Ribosomal protein S14, also known as RPS14, is a ribosomal protein. Ribosomes, the organelles that catalyze protein synthesis, are composed of a small subunit and a large subunit that consist of over 80 distinct ribosomal proteins. RPS14 is a component of the 40S subunit that localized to the cytoplasm. Recombinant human RPS14 protein, fused to His-tag at N-terminus, was expressed in E.coli and purified by using conventional chromatography

## Target Details

techniques. Synonyms: 40S ribosomal protein S14, EMTB. NCBI no.: NP\_001020242

Molecular Weight: 18.7 kDa (174aa), confirmed by MALDI-TOF

Pathways: [Ribonucleoprotein Complex Subunit Organization](#), [Ribosome Assembly](#)

## Application Details

Restrictions: For Research Use only

## Handling

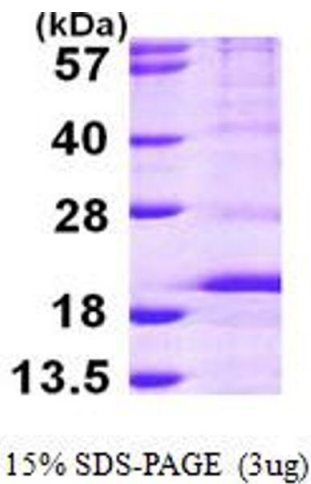
Format: Liquid

Concentration: 0.25 mg/ml (determined by Bradford assay)

Buffer: Liquid. In 20mM Tris-HCl buffer (pH 8.0) containing 1mM DTT, 40% glycerol, 100mM NaCl

Storage: 4 °C

## Images



### SDS-PAGE

Image 1.