

Datasheet for ABIN7279422

MSRA Protein (AA 1-212) (His tag)[Go to Product page](#)**1** Image

Overview

Quantity:	100 µg
Target:	MSRA
Protein Characteristics:	AA 1-212
Origin:	E. coli
Source:	Escherichia coli (E. coli)
Protein Type:	Recombinant
Purification tag / Conjugate:	This MSRA protein is labelled with His tag.
Application:	SDS-PAGE (SDS)

Product Details

Characteristics:	msrA, 1-212aa, E.coli, His tag, E.coli
Purity:	> 90 % by SDS - PAGE

Target Details

Target:	MSRA
Abstract:	MSRA Products
Background:	Peptide methionine sulfoxide reductase A, also known msrA, is an enzyme that catalyzes the reversible oxidation-reduction of methionine sulfoxide in proteins to methionine. This protein could have an important function as a repair enzyme for proteins that have been inactivated by oxidation. Recombinant E.coli msrA protein, fused to His-tag at N-terminus, was expressed in E.coli and purified by using conventional chromatography techniques. Synonyms: Peptide

Target Details

methionine sulfoxide reductase A, ECK4215, JW4178, pms, pmsR, peptide-methionine (S)-S-oxide reductase. NCBI no.: NP_418640

Molecular Weight: 25.4 kDa (232aa), confirmed by MALDI-TOF

Application Details

Restrictions: For Research Use only

Handling

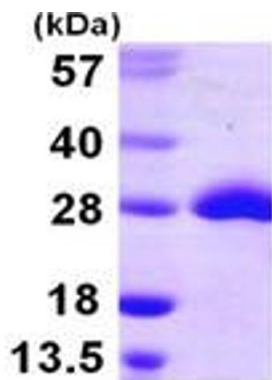
Format: Liquid

Concentration: 0.5 mg/ml (determined by Bradford assay)

Buffer: Liquid. In 20mM Tris-HCl buffer (pH 8.0) containing 1mM DTT, 10% glycerol, 0.1M NaCl

Storage: 4 °C

Images



15% SDS-PAGE (3ug)

SDS-PAGE

Image 1.