



[Go to Product page](#)

Datasheet for ABIN7279453
CLPP Protein (AA 57-277)

1 Image

Overview

Quantity:	100 µg
Target:	CLPP
Protein Characteristics:	AA 57-277
Origin:	Human
Source:	Escherichia coli (E. coli)
Protein Type:	Recombinant
Application:	SDS-PAGE (SDS)

Product Details

Characteristics:	CLPP, 57-277aa, Human, E.coli
Purity:	> 90 % by SDS - PAGE

Target Details

Target:	CLPP
Alternative Name:	CLPP (CLPP Products)

Background: CLPP (ATP-dependent Clp protease proteolytic subunit) belongs to the peptidase family S14. CLPP cleaves peptides in various proteins in a process that requires ATP hydrolysis. CLPP, the catalytic core of the Clp proteolytic complex, is widely involved in many cellular processes via the regulation of intracellular protein quality. CLPP may be responsible for a fairly general and central housekeeping function rather than for the degradation of specific substrates.

Recombinant human CLPP protein was expressed in E.coli and purified by using conventional

Target Details

chromatography techniques. Synonyms: Putative ATP-dependent Clp protease proteolytic subunit mitochondrial, Endopeptidase Clp. NCBI no.: NP_006003

Molecular Weight: 24.2kDa (222aa), confirmed by MALDI-TOF

Application Details

Restrictions: For Research Use only

Handling

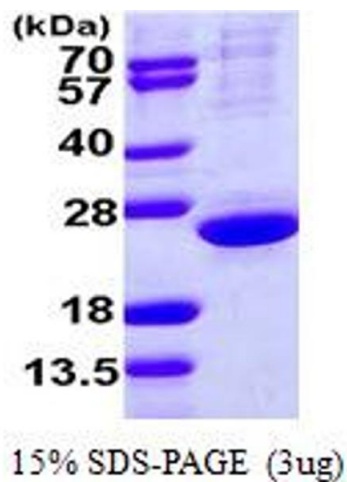
Format: Liquid

Concentration: 0.5mg/ml (determined by Bradford assay)

Buffer: Liquid. In 20mM Tris-HCl buffer (pH 7.5) containing 2mM DTT, 20% glycerol, 100mM NaCl

Storage: 4 °C

Images



SDS-PAGE

Image 1.