

Datasheet for ABIN7279560
RAB22A Protein (AA 1-194) (His tag)



[Go to Product page](#)

1 Image

Overview

| | |
|-------------------------------|---|
| Quantity: | 100 µg |
| Target: | RAB22A |
| Protein Characteristics: | AA 1-194 |
| Origin: | Human |
| Source: | Escherichia coli (E. coli) |
| Protein Type: | Recombinant |
| Purification tag / Conjugate: | This RAB22A protein is labelled with His tag. |
| Application: | SDS-PAGE (SDS) |

Product Details

| | |
|------------------|---|
| Characteristics: | RAB22A, 1-194aa, Human, His tag, E.coli |
| Purity: | > 95 % by SDS - PAGE |

Target Details

| | |
|-------------------|--|
| Target: | RAB22A |
| Alternative Name: | RAB22A (RAB22A Products) |
| Background: | RAB22A, also known as ras-related protein Rab-22A, is a member of the RAB family of small GTPases. The GTP-bound form of the encoded protein has been shown to interact with early-endosomal antigen 1, and may be involved in the trafficking of and interaction between endosomal compartments. Recombinant human RAB22A protein, fused to His-tag at N-terminus, was expressed in E.coli and purified by using conventional chromatography. |

Target Details

Synonyms: Ras-related protein Rab-22A, RAB22. NCBI no.: NP_065724

Molecular Weight: 24.0 kDa (214aa), confirmed by MALDI-TOF

Application Details

Restrictions: For Research Use only

Handling

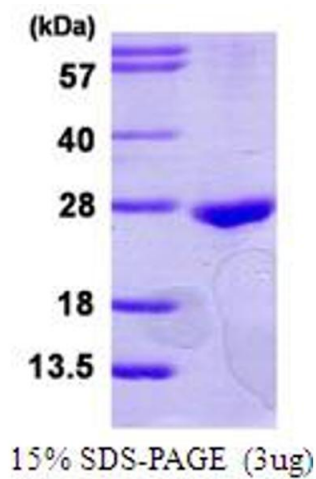
Format: Liquid

Concentration: 0.25 mg/ml (determined by Bradford assay)

Buffer: Liquid. 20mM Tris-HCl buffer (pH8.0) containing 40% glycerol, 0.1M NaCl

Storage: 4 °C

Images



SDS-PAGE

Image 1.