

Datasheet for ABIN7279653

BDH1 Protein (AA 47-343) (His tag)[Go to Product page](#)**1** Image

Overview

Quantity:	100 µg
Target:	BDH1
Protein Characteristics:	AA 47-343
Origin:	Human
Source:	Escherichia coli (E. coli)
Protein Type:	Recombinant
Purification tag / Conjugate:	This BDH1 protein is labelled with His tag.
Application:	SDS-PAGE (SDS)

Product Details

Characteristics:	BDH1, 47-343aa, Human, His Tag, E.coli
Purity:	> 85 % by SDS - PAGE

Target Details

Target:	BDH1
Alternative Name:	BDH1 (BDH1 Products)
Background:	BDH1 is a member of the short-chain dehydrogenase/reductase gene family. This protein forms a homotetrameric lipid-requiring enzyme of the mitochondrial membrane and has a specific requirement for phosphatidylcholine for optimal enzymatic activity. It catalyzes the interconversion of acetoacetate and (R)-3-hydroxybutyrate, the two major ketone bodies produced during fatty acid catabolism. Recombinant human BDH1 protein, fused to His-tag at

Target Details

N-terminus, was expressed in E.coli and purified by using conventional chromatography.
Synonyms: D-beta-hydroxybutyrate dehydrogenase, BDH, MGC2723, MGC4347, MGC9788, SDR9C1. NCBI no.: NP_976059

Molecular Weight: 35.3 kDa (318aa), confirmed by MALDI-TOF

Pathways: [Response to Growth Hormone Stimulus](#)

Application Details

Restrictions: For Research Use only

Handling

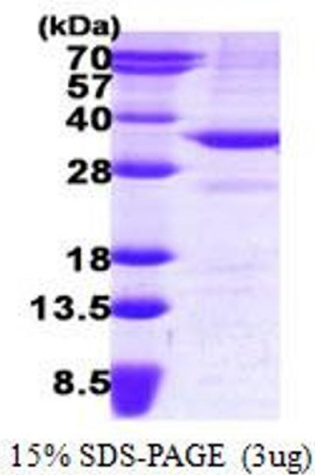
Format: Liquid

Concentration: 0.25 mg/ml (determined by Bradford assay)

Buffer: Liquid. 20mM Tris-HCl buffer (pH8.0) containing 30% glycerol 0.2M NaCl, 2mM DTT, 0.1mM PMSF

Storage: 4 °C

Images



SDS-PAGE

Image 1.