



[Go to Product page](#)

Datasheet for ABIN7279737

MAD2L1BP Protein (AA 1-274) (His tag)

1 Image

Overview

Quantity:	100 µg
Target:	MAD2L1BP
Protein Characteristics:	AA 1-274
Origin:	Human
Source:	Escherichia coli (E. coli)
Protein Type:	Recombinant
Purification tag / Conjugate:	This MAD2L1BP protein is labelled with His tag.
Application:	SDS-PAGE (SDS)

Product Details

Characteristics:	MAD2L1BP, 1-274aa , Human, His tag, E.coli
Purity:	> 90 % by SDS - PAGE

Target Details

Target:	MAD2L1BP
Alternative Name:	MAD2L1BP (MAD2L1BP Products)
Background:	MAD2L1-binding protein, also known as MAD2L1BP, belongs to the MAD2L1BP family. This protein may function to silence the spindle checkpoint and allow mitosis to proceed through anaphase by binding MAD2L1 after it has become dissociated from the MAD2L1-CDC20 complex. Recombinant human MAD2L1BP protein, fused to His-tag at N-terminus, was expressed in E.coli and purified by using conventional chromatography techniques. Synonyms:

Target Details

CMT2. NCBI no.: NP_055443

Molecular Weight: 33.6kDa (298aa), confirmed by MALDI-TOF (Molecular size on SDS-PAGE will appear higher)

Application Details

Restrictions: For Research Use only

Handling

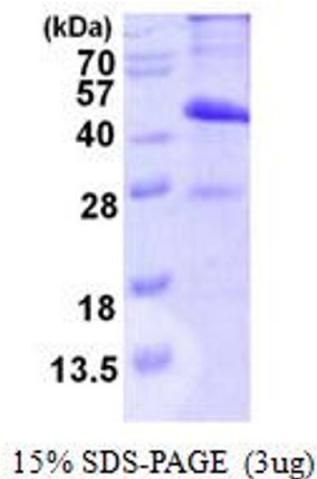
Format: Liquid

Concentration: 0.5mg/ml (determined by Bradford assay)

Buffer: Liquid. In 20mM Tris-HCl buffer (pH 8.0) containing 1mM DTT, 10% glycerol, 100mM NaCl

Storage: 4 °C

Images



SDS-PAGE

Image 1.