

Datasheet for ABIN7281248

## ErbB2/Her2 Protein (AA 23-652) (His tag)



[Go to Product page](#)

### 1 Image

#### Overview

Quantity:	100 µg
Target:	ErbB2/Her2
Protein Characteristics:	AA 23-652
Origin:	Human
Source:	Baculovirus infected Insect Cells
Protein Type:	Recombinant
Purification tag / Conjugate:	This ErbB2/Her2 protein is labelled with His tag.
Application:	SDS-PAGE (SDS)

#### Product Details

Sequence:	<p>TQVCTGTDMMK LRLPASPETH LDMLRHLYQG CQVVQGNLEL TYLPTNASLS FLQDIQEVQG</p> <p>YVLIAHNQVR QVPLQRLRIV RGTQLFEDNY ALAVLDNGDP LNNTPVTGA SPGGLRELQL</p> <p>RSLTEILKGG VLIQRNPQLC YQDTILWKDI FHKNNQLALT LIDTNRSRAC HPCSPMCKGS</p> <p>RCWGESSDC QSLTRTVCA GGCARCKGPLP TDCCHEQCAA GCTGPKHSDC LACLHFNHSG</p> <p>ICELHCPALV TYNTDTFESM PNPEGRYTFG ASCVTACPYN YLSTDVGSCT LVCPLHNQEV</p> <p>TAEDGTQRCE KCSKPCARVC YGLGMEHLRE VRAVTSANIQ EFAGCKKIFG SLAFLPESFD</p> <p>GDPASNTAPL QPEQLQVFET LEEITGYLYI SAWPDSLPLD SVFQNLQVIR GRILHNGAYS</p> <p>LTLQGLGISW LGLRSLREL GSGALIHNT HLCFVHTVPW DQLFRNPHQA LLHTANRPED</p> <p>ECVGEGLACH QLCARGHCWG PGPTQCVNCS QFLRGQECVE ECRVLQGLPR EYVNARHCLP</p> <p>CHPECQPQNG SVTCFGPEAD QCVACAHYKD PPFCVARCPS GVKPDLSEMP IWKFPDEEGA</p> <p>CQPCPINCTH SCVDLDDKGC PAEQRASPLT</p>
Purity:	> 85% by SDS-PAGE

## Product Details

Endotoxin Level: < 1 EU per 1ug of protein (determined by LAL method)

## Target Details

Target: ErbB2/Her2

Alternative Name: ErbB2/Her2 ([ErbB2/Her2 Products](#))

Background: ERBB2, also known as receptor tyrosine-protein kinase erbB-2 isoform, belongs to the epidermal growth factor (EGF) receptor family. It is an oncogene encoding a type 1 tyrosine kinase growth factor receptor. Its overexpression is associated with reduced disease free and overall survival. It is a predictor factor for poor response to chemotherapy and plays a key role in development, cell proliferation and differentiation. It is permanently coupled to phospholipase C gamma and involves tyrosine phosphorylation and activation of PLC gamma. It reflects the molecular biological properties of gastric cancer and may be clinically used to determine indications for the use of targeted drugs. It results in cellular transformation and is associated with a variety of malignancy and breast, prostate, ovarian, lung cancers. Recombinant human ERBB2, fused to His-tag at C-terminus, was expressed in insect cell and purified by using conventional chromatography techniques.

Molecular Weight: 70.4 kDa (638aa)

NCBI Accession: [NP\\_004439](#)

UniProt: [P04626](#)

Pathways: [RTK Signaling](#), [Fc-epsilon Receptor Signaling Pathway](#), [EGFR Signaling Pathway](#), [Neurotrophin Signaling Pathway](#), [Skeletal Muscle Fiber Development](#)

## Application Details

Application Notes: Optimal working dilution should be determined by the investigator.

Restrictions: For Research Use only

## Handling

Format: Liquid

Concentration: 0.25 mg/mL

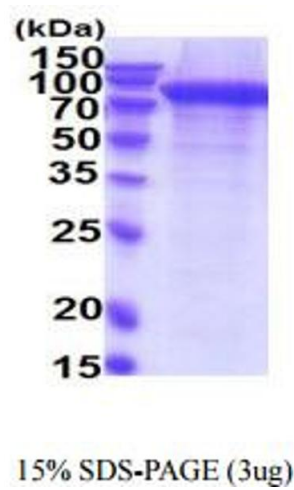
Buffer: Liquid. In Phosphate Buffered Saline ( pH 7.4) containing 10 % glycerol.

Storage: 4 °C,-20 °C,-80 °C

Handling

Storage Comment: Can be stored at +2°C to +8°C for 1 week. For long term storage, aliquot and store at -20°C to -80°C. Avoid repeated freezing and thawing cycles.

Images



**SDS-PAGE**

Image 1.