

Datasheet for ABIN7281274  
**MME Protein (AA 52-750) (His tag)**



[Go to Product page](#)

1 Image

## Overview

Quantity:	100 µg
Target:	MME
Protein Characteristics:	AA 52-750
Origin:	Human
Source:	Baculovirus infected Insect Cells
Protein Type:	Recombinant
Purification tag / Conjugate:	This MME protein is labelled with His tag.
Application:	SDS-PAGE (SDS)

## Product Details

Sequence:	ADPYDDGICK SSDCIKSAAR LIQNMDATTE PCTDFFKYAC GGWLKRNVIP ETSSRYGNFD ILRDELEVVL KDVLPQPKTE DIVAVQAKA LYRSCINESA IDSRGGEPLL KLLPDIYGWP VATENWEQKY GASWTAEKAI AQLNSKYGKK VLINLFGVTD DKNSVNHVIH IDQPRLGLPS RDYYECTGIY KEACTAYVDF MISVARLIRQ EERLPIDENQ LALEMNKVME LEKEIANATA KPEDRNDPML LYNKMTLAQI QNNFSLEING KPFSWLNFTN EIMSTVNISI TNEEDVVVYA PEYLTKLKPI LTKYSARDLQ NLMSWRFIMD LVSSLSRPTYK ESRNAFRKAL YGTTSETATW RRCANYVNGN MENAVGRLYV EAAFAGESKH VVEDLIAQIR EVFIQTLLDDL TWMDAETKKR AEEKALAIKE RIGYPDDIVS NDNKLNNEYL ELNYKEDEYF ENIIQNLKFS QSKQLKKLRE KVDKDEWISG AAVVNAFYSS GRNQIVFPAG ILQPPFFSAQ QSNSLNYGGI GMVIGHEITH GFDDNGRNFN KDGDLVDWWT QQSASNFEQ SQCMVYQYGN FSWDLAGGQH LNGINTLGEN IADNGGLGQA YRAYQNYIKK NGEKLLPGL DLNHKQLFFL NFAQVWCGTY RPEYAVNSIK TDVHSPGNFR IIGTLQNSAE FSEAFHCRKN SYMNPPEKKCR VWHHHHHH
-----------	---

## Product Details

---

Purity:	> 95 % by SDS - PAGE
Endotoxin Level:	< 1.0 EU per 1ug of protein (determined by LAL method)

## Target Details

---

Target:	MME
Alternative Name:	MME ( <a href="#">MME Products</a> )
Target Type:	Chemical
Background:	<p>MME, also known as neprilysin, is a zinc metallopeptidase expressed at the cell surface of a variety of cells. It degrades the amyloid beta peptide whose abnormal misfolding and aggregation in neural tissue has been implicated as a cause of Alzheimer's disease. It is expressed in a wide variety of tissues and is particularly abundant in kidney. It is also a common acute lymphocytic leukemia antigen that is an important cell surface marker in the diagnosis of human acute lymphocytic leukemia (ALL). It is of use in hematological diagnosis since it is expressed by early B, pro-B and pre-B lymphocytes, and by lymph node germinal centers. Recombinant human MME, fused to His-tag at C-terminus, was expressed in insect cell and purified by using conventional chromatography techniques.</p>
Molecular Weight:	80.9kDa (708aa) 70-100kDa (SDS-PAGE under reducing conditions)
NCBI Accession:	<a href="#">NP_000893</a>
UniProt:	<a href="#">P08473</a>
Pathways:	<a href="#">RTK Signaling</a> , <a href="#">Peptide Hormone Metabolism</a> , <a href="#">Regulation of Systemic Arterial Blood Pressure by Hormones</a> , <a href="#">Smooth Muscle Cell Migration</a>

## Application Details

---

Application Notes:	Optimal working dilution should be determined by the investigator.
Restrictions:	For Research Use only

## Handling

---

Format:	Liquid
Concentration:	1 mg/mL
Buffer:	Liquid. In 20 mM Tris-HCl buffer ( pH 8.0) containing 100 mM NaCl, 0.1 mM PMSF, 10 % glycerol.

## Handling

---

Storage: 4 °C,-20 °C,-80 °C

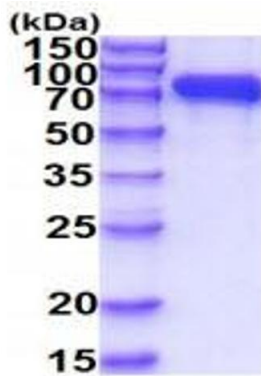
---

Storage Comment: Can be stored at +4C short term (1-2 weeks). For long term storage, aliquot and store at -20C or -70C. Avoid repeated freezing and thawing cycles.

---

## Images

---



15% SDS-PAGE (3ug)

### SDS-PAGE

Image 1.