

Datasheet for ABIN7281290
SNCG Protein (AA 1-123) (His tag)[Go to Product page](#)

1 Image

Overview

Quantity:	100 µg
Target:	SNCG
Protein Characteristics:	AA 1-123
Origin:	Human
Source:	Escherichia coli (E. coli)
Protein Type:	Recombinant
Purification tag / Conjugate:	This SNCG protein is labelled with His tag.
Application:	SDS-PAGE (SDS)

Product Details

Sequence:	MGSSHHHHHH SSSLVPRGSH MGSMDVFKKG FSIKEGVVG AVEKTKQGVV EAAEKTKEGV MYVGTKTKEN VVQSVTSVAE KTKEQANAVS AVVSSVNTV ANKTVEEAEN IWTTGVMRK EDLEPPAQDQ EAKEQEENEE AKSGED
Purity:	> 95 % by SDS - PAGE

Target Details

Target:	SNCG
Alternative Name:	Sncg (SNCG Products)
Background:	Sncg, also known as gamma-Synuclein, is an acidic neuronal protein. It plays a role in neurofilament network integrity. This protein activates the MAPK and Elk-1 signal transduction pathway. According to some research, Sncg may play an important role in invasion, infiltration

Target Details

and apoptosis of esophageal cancer and serve as target spots in the targeted therapy of esophageal cancer. Recombinant mouse Sncg, fused to His-tag at N-terminus, was expressed in E. coli and purified by using conventional chromatography techniques.

Molecular Weight: 15.5 kDa (146aa) Confirmed by MALDI-TOF

NCBI Accession: [NP_035560](#)

UniProt: [Q9Z0F7](#)

Application Details

Application Notes: Optimal working dilution should be determined by the investigator.

Restrictions: For Research Use only

Handling

Format: Liquid

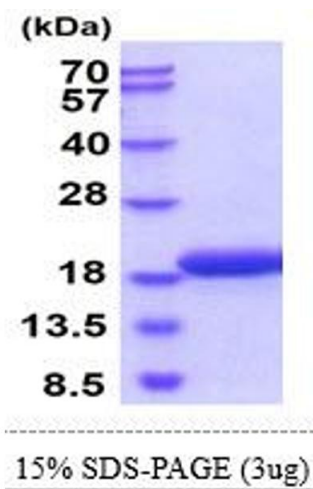
Concentration: 1 mg/mL

Buffer: Liquid. In 20 mM Tris-HCl(pH 8.0) containing 0.1M NaCl

Storage: 4 °C,-20 °C,-80 °C

Storage Comment: Can be stored at +4C short term (1-2 weeks). For long term storage, aliquot and store at -20C or -70C. Avoid repeated freezing and thawing cycles.

Images



SDS-PAGE

Image 1.