

Datasheet for ABIN7281315
LCP2 Protein (AA 1-533) (His tag)



[Go to Product page](#)

1 Image

Overview

Quantity:	100 µg
Target:	LCP2
Protein Characteristics:	AA 1-533
Origin:	Human
Source:	Baculovirus infected Insect Cells
Protein Type:	Recombinant
Purification tag / Conjugate:	This LCP2 protein is labelled with His tag.
Application:	SDS-PAGE (SDS)

Product Details

Sequence:	ADPMALRNVP FRSEVLGWDP DSLADYFKKL NYKDCEKAVK KYHIDGARFL NLTENDIQKF PKLRVPILSK LSQEINKNEE RRSIFTRKPQ VPRFPEETES HEEDNGGWSS FEEDDYESP DDQDGEDDGD YESPNEEEEA PVEDDADYEP PPSNDEEALQ NSILPAKPPF NSNSMYIDRP PSGKTPQPP VPPQRPMAAL PPPPAGRNHS PLPPPQTNHE EPSRSRNHKT AKLPAPSIDR STKPPLDRSL APFDREPFTL GKKPPFSDKP SIPAGRSLGE HLPKIQKPPL PPTTERHERS SPLPGKKPPV PKHGWGPDRR ENEDDVHQR PLPQPALLPM SSNTFPSRST KPSPMNPLPS SHMPGAFSES NSSFPQSASL PPYFSQGPSN RPPIRAEGRN FPLPLPNKPR PPSPAEENS LNEEWYVSYI TRPEAEAALR KINQDGTFLV RDSSKTTTN PYVLMVLYKD KVYNIQIRYQ KESQVYLLGT GLRGKEDFLS VSDIIDYFRK MPLLLIDGKN RGSRYQCTLT HAAGYPHHHH HH
Purity:	> 90 % by SDS - PAGE
Endotoxin Level:	< 1.0 EU per 1ug of protein (determined by LAL method)

Target Details

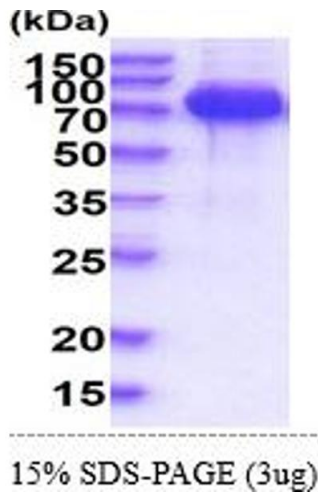
Target:	LCP2
Alternative Name:	LCP2 (LCP2 Products)
Background:	LCP2, also known as lymphocyte cytosolic protein 2, is an intracellular docking protein with a single SH2 recognition domain. It is involved in T-cell antigen receptor mediated signaling. This protein is phosphorylated by ZAP70 leading to NF-AT and IL2 gene activation. Recombinant human LCP2 protein, fused to His-tag at C-terminus, was expressed in insect cell and purified by using conventional chromatography techniques.
Molecular Weight:	61.2kDa (542aa) 70-100KDa (SDS-PAGE under reducing conditions.)
NCBI Accession:	NP_005556
UniProt:	Q13094
Pathways:	TCR Signaling, Fc-epsilon Receptor Signaling Pathway

Application Details

Application Notes:	Optimal working dilution should be determined by the investigator.
Restrictions:	For Research Use only

Handling

Format:	Liquid
Concentration:	0.25 mg/mL
Buffer:	Liquid. In Phosphate Buffered Saline (pH 7.4) containing 10 % glycerol.
Storage:	4 °C,-20 °C,-80 °C
Storage Comment:	Can be stored at +4C short term (1-2 weeks). For long term storage, aliquot and store at -20C or -70C. Avoid repeated freezing and thawing cycles.



SDS-PAGE

Image 1.