



[Go to Product page](#)

Datasheet for ABIN728533

## anti-Beta Lactoglobulin (LGB) antibody

1 Image

1 Publication

### Overview

Quantity:	100 µL
Target:	Beta Lactoglobulin (LGB)
Reactivity:	Cow, Goat, Sheep
Host:	Rabbit
Clonality:	Polyclonal
Conjugate:	Un-conjugated
Application:	Western Blotting (WB), ELISA, Immunofluorescence (Cultured Cells) (IF (cc)), Immunofluorescence (Paraffin-embedded Sections) (IF (p)), Immunohistochemistry (Frozen Sections) (IHC (fro))

### Product Details

Immunogen:	Beta-lactoglobulin
Isotype:	IgG
Cross-Reactivity:	Cow, Goat, Sheep
Purification:	Purified by Protein A.

### Target Details

Target:	Beta Lactoglobulin (LGB)
Alternative Name:	beta-Lactoglobulin ( <a href="#">LGB Products</a> )
Background:	Synonyms: LGB, Beta-lactoglobulin, Beta-LG Background: Primary component of whey, it binds retinol and is probably involved in the

## Target Details

---

transport of that molecule.

Gene ID: 280838

UniProt: [P02754](#)

## Application Details

---

Application Notes: WB 1:300-5000  
ELISA 1:500-1000  
IHC-F 1:100-500  
IF(IHC-P) 1:50-200  
IF(IHC-F) 1:50-200  
IF(ICC) 1:50-200

Restrictions: For Research Use only

## Handling

---

Format: Liquid

Concentration: 1 µg/µL

Buffer: 0.01M TBS( pH 7.4) with 1 % BSA, 0.02 % Proclin300 and 50 % Glycerol.

Preservative: ProClin

Precaution of Use: This product contains ProClin: a POISONOUS AND HAZARDOUS SUBSTANCE, which should be handled by trained staff only.

Storage: 4 °C,-20 °C

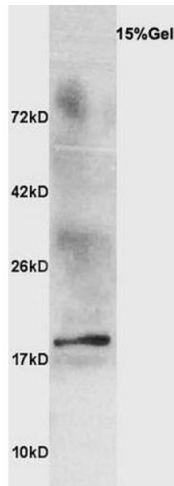
Storage Comment: Shipped at 4°C. Store at -20°C for one year. Avoid repeated freeze/thaw cycles.

Expiry Date: 12 months

## Publications

---

Product cited in: Zhong, Yu, Tu, Zhou, Liu, Luo, Liu, Prakash: "Comparison of antigenicity and conformational changes to  $\beta$ -lactoglobulin following kestose glycation reaction with and without dynamic high-pressure microfluidization treatment." in: **Food chemistry**, Vol. 278, pp. 491-496, (2019) ([PubMed](#)).



### Western Blotting

**Image 1.** Ewe's milk probed with Anti Beta-lactoglobulin Polyclonal Antibody, Unconjugated at 1:3000 for 90 min at 37°C. Predicted band 19kD. Observed band size: 19kD