

Datasheet for ABIN728548  
**anti-SERPINB7 antibody (AA 301-380)**[Go to Product page](#)

## 2 Images

## Overview

Quantity:	100 µL
Target:	SERPINB7
Binding Specificity:	AA 301-380
Reactivity:	Mouse, Rat
Host:	Rabbit
Clonality:	Polyclonal
Conjugate:	This SERPINB7 antibody is un-conjugated
Application:	Western Blotting (WB), ELISA, Immunofluorescence (Cultured Cells) (IF (cc)), Immunofluorescence (Paraffin-embedded Sections) (IF (p)), Immunohistochemistry (Paraffin-embedded Sections) (IHC (p)), Immunohistochemistry (Frozen Sections) (IHC (fro))

## Product Details

Immunogen:	KLH conjugated synthetic peptide derived from human Megsin
Isotype:	IgG
Cross-Reactivity:	Mouse, Rat
Predicted Reactivity:	Human
Purification:	Purified by Protein A.

## Target Details

Target:	SERPINB7
---------	----------

## Target Details

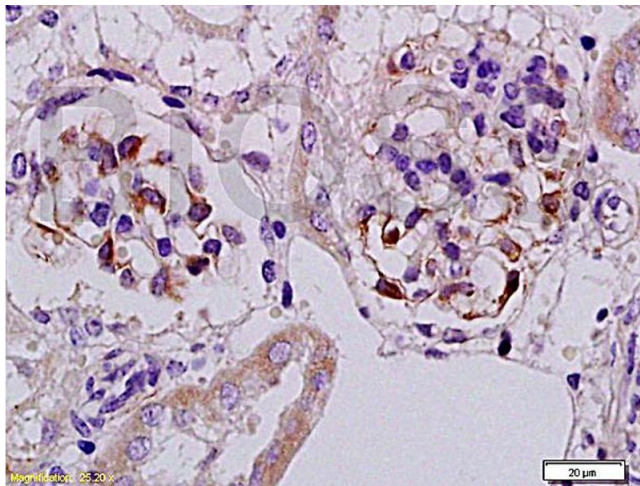
Alternative Name:	Megsin ( <a href="#">SERPINB7 Products</a> )
Background:	Synonyms: PPKN, TP55, MEGSIN, Serpin B7, SERPINB7 Background: Might function as an inhibitor of Lys-specific proteases. Might influence the maturation of megakaryocytes via its action as a serpin.
Gene ID:	8710
UniProt:	<a href="#">O75635</a>

## Application Details

Application Notes:	WB 1:300-5000 ELISA 1:500-1000 IHC-P 1:200-400 IHC-F 1:100-500 IF(IHC-P) 1:50-200 IF(IHC-F) 1:50-200 IF(ICC) 1:50-200
Restrictions:	For Research Use only

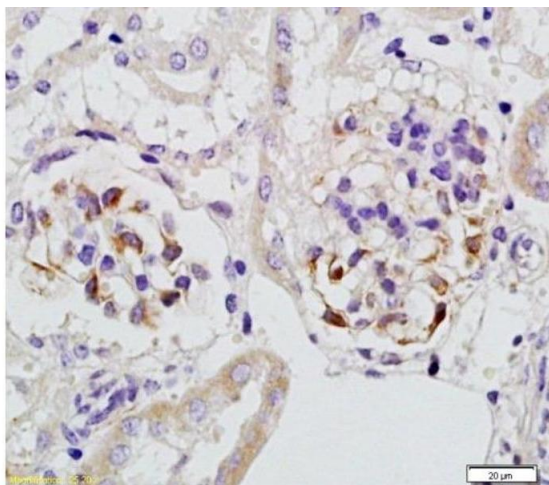
## Handling

Format:	Liquid
Concentration:	1 µg/µL
Buffer:	0.01M TBS( pH 7.4) with 1 % BSA, 0.02 % Proclin300 and 50 % Glycerol.
Preservative:	ProClin
Precaution of Use:	This product contains ProClin: a POISONOUS AND HAZARDOUS SUBSTANCE, which should be handled by trained staff only.
Storage:	4 °C, -20 °C
Storage Comment:	Shipped at 4°C. Store at -20°C for one year. Avoid repeated freeze/thaw cycles.
Expiry Date:	12 months



#### Immunohistochemistry

**Image 1.** Formalin-fixed and paraffin embedded rat kidney tissue with Anti-Megsin Polyclonal Antibody, Unconjugated (ABIN728548) at 1:200, followed by conjugation to the secondary antibody and DAB staining



#### Immunohistochemistry (Paraffin-embedded Sections)

**Image 2.** Formalin-fixed and paraffin embedded rat kidney tissue with Anti-Megsin Polyclonal Antibody, Unconjugated at 1:200, followed by conjugation to the secondary antibody and DAB staining