



[Go to Product page](#)

Datasheet for ABIN728563

anti-LYZ antibody

2 Images

Overview

Quantity:	100 µL
Target:	LYZ
Reactivity:	Human, Mouse, Rat
Host:	Rabbit
Clonality:	Polyclonal
Conjugate:	This LYZ antibody is un-conjugated
Application:	Western Blotting (WB), ELISA, Immunohistochemistry (Paraffin-embedded Sections) (IHC (p)), Immunohistochemistry (Frozen Sections) (IHC (fro)), Immunofluorescence (Cultured Cells) (IF (cc)), Immunofluorescence (Paraffin-embedded Sections) (IF (p))

Product Details

Immunogen:	Full length native Lysozyme
Isotype:	IgG
Cross-Reactivity:	Mouse, Rat
Predicted Reactivity:	Chicken
Purification:	Purified by Protein A.

Target Details

Target:	LYZ
Alternative Name:	Lysozyme (LYZ Products)

Target Details

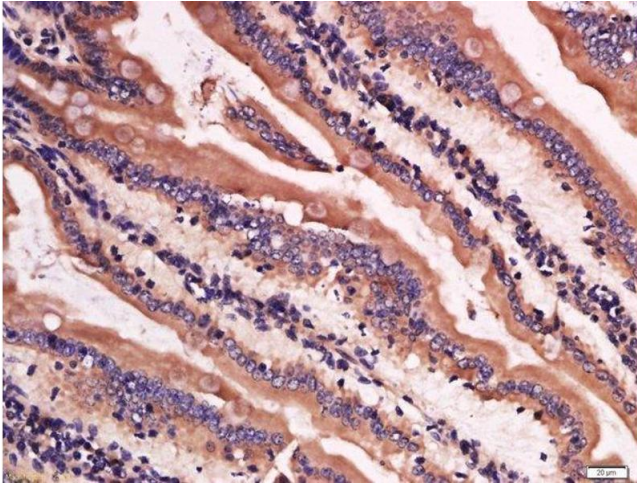
Background:	Synonyms: LZM, Lysozyme C, 1,4-beta-N-acetylmuramidase C, LYZ Background: Lysozymes have primarily a bacteriolytic function, those in tissues and body fluids are associated with the monocyte-macrophage system and enhance the activity of immunoagents.
Gene ID:	4069
UniProt:	P61626

Application Details

Application Notes:	WB 1:300-5000 ELISA 1:500-1000 IHC-P 1:200-400 IHC-F 1:100-500 IF(IHC-P) 1:50-200 IF(IHC-F) 1:50-200 IF(ICC) 1:50-200
Restrictions:	For Research Use only

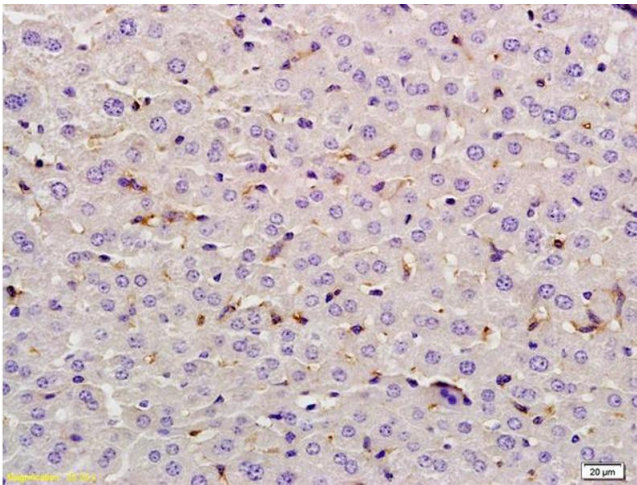
Handling

Format:	Liquid
Concentration:	1 µg/µL
Buffer:	0.01M TBS(pH 7.4) with 1 % BSA, 0.02 % Proclin300 and 50 % Glycerol.
Preservative:	ProClin
Precaution of Use:	This product contains ProClin: a POISONOUS AND HAZARDOUS SUBSTANCE, which should be handled by trained staff only.
Storage:	4 °C,-20 °C
Storage Comment:	Shipped at 4°C. Store at -20°C for one year. Avoid repeated freeze/thaw cycles.
Expiry Date:	12 months



Immunohistochemistry (Paraffin-embedded Sections)

Image 1. Paraformaldehyde-fixed, paraffin embedded mouse intestine; Antigen retrieval by boiling in sodium citrate buffer (pH6) for 15min; Block endogenous peroxidase by 3% hydrogen peroxide for 30 minutes; Blocking buffer (normal goat serum) at 37°C for 20min; Antibody incubation with Rabbit Anti-Lysozyme Polyclonal Antibody, Unconjugated at 1:200 overnight at 4°C, followed by a conjugated secondary for 90 minutes and DAB staining.



Immunohistochemistry

Image 2. Formalin-fixed and paraffin embedded rat liver labeled with Anti-Lysozyme Polyclonal Antibody, Unconjugated (ABIN728563) at 1:200 followed by conjugation to the secondary antibody and DAB staining.