



[Go to Product page](#)

Datasheet for ABIN728578

anti-MAGEA1 antibody (AA 101-200)

2 Images

Overview

Quantity:	100 µL
Target:	MAGEA1
Binding Specificity:	AA 101-200
Reactivity:	Human, Rat
Host:	Rabbit
Clonality:	Polyclonal
Conjugate:	This MAGEA1 antibody is un-conjugated
Application:	Western Blotting (WB), ELISA, Immunohistochemistry (Paraffin-embedded Sections) (IHC (p)), Immunofluorescence (Cultured Cells) (IF (cc)), Immunofluorescence (Paraffin-embedded Sections) (IF (p)), Immunohistochemistry (Frozen Sections) (IHC (fro))

Product Details

Immunogen:	KLH conjugated synthetic peptide derived from human MAGE-1
Isotype:	IgG
Cross-Reactivity:	Human, Rat
Purification:	Purified by Protein A.

Target Details

Target:	MAGEA1
Alternative Name:	MAGE-1 (MAGEA1 Products)

Target Details

Background: Synonyms: CT1.1, MAGE1, Melanoma-associated antigen 1, Antigen MZ2-E, Cancer/testis antigen 1.1, MAGE-1 antigen, MAGEA1, MAGE1A

Background: May be involved in transcriptional regulation through interaction with SNW1 and recruiting histone deacetylase HDAC1. May inhibit notch intracellular domain (NICD) transactivation. May play a role in embryonal development and tumor transformation or aspects of tumor progression. Antigen recognized on a melanoma by autologous cytolytic T-lymphocytes.

Gene ID: 4100

UniProt: [P43355](#)

Application Details

Application Notes: WB 1:300-5000
ELISA 1:500-1000
IHC-P 1:200-400
IHC-F 1:100-500
IF(IHC-P) 1:50-200
IF(IHC-F) 1:50-200
IF(ICC) 1:50-200

Restrictions: For Research Use only

Handling

Format: Liquid

Concentration: 1 µg/µL

Buffer: 0.01M TBS(pH 7.4) with 1 % BSA, 0.02 % Proclin300 and 50 % Glycerol.

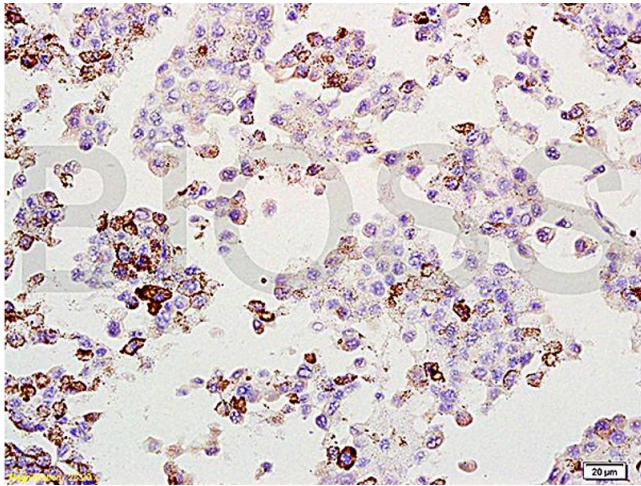
Preservative: ProClin

Precaution of Use: This product contains ProClin: a POISONOUS AND HAZARDOUS SUBSTANCE, which should be handled by trained staff only.

Storage: 4 °C,-20 °C

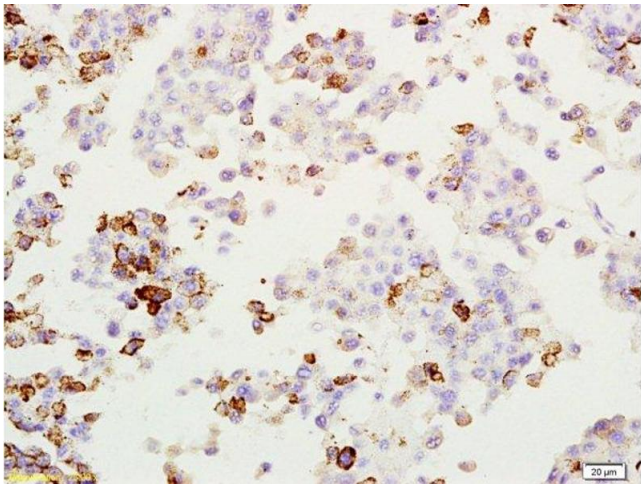
Storage Comment: Shipped at 4°C. Store at -20°C for one year. Avoid repeated freeze/thaw cycles.

Expiry Date: 12 months



Immunohistochemistry

Image 1. Formalin-fixed and paraffin embedded rat lung melanoma labeled with Anti-MAGE-1 Polyclonal Antibody, Unconjugated (ABIN728578) at 1:200, followed by conjugation to the secondary antibody and DAB staining



Immunohistochemistry (Paraffin-embedded Sections)

Image 2. Formalin-fixed and paraffin embedded rat lung melanoma labeled with Anti-MAGE-1 Polyclonal Antibody, Unconjugated at 1:200, followed by conjugation to the secondary antibody and DAB staining