

Datasheet for ABIN7286093  
**ARL1 Protein (AA 1-181) (His tag)**



[Go to Product page](#)

1 Image

## Overview

Quantity:	200 µg
Target:	ARL1
Protein Characteristics:	AA 1-181
Origin:	Human
Source:	Escherichia coli (E. coli)
Protein Type:	Recombinant
Purification tag / Conjugate:	This ARL1 protein is labelled with His tag.
Application:	ELISA, Western Blotting (WB)

## Product Details

Purity:	Greater than 95 % as determined by SDS-PAGE
Sterility:	0.2 µm filtered

## Target Details

Target:	ARL1
Alternative Name:	<a href="#">ARL1 (ARL1 Products)</a>
Background:	ADP ribosylation factor like 1, ADP-ribosylation factor-like protein 1, ARFL1, Arl1, ARL1_HUMAN
Molecular Weight:	19.8 kDa
UniProt:	<a href="#">P40616</a>

## Application Details

---

Application Notes: Optimal working dilution should be determined by the investigator.

---

Restrictions: For Research Use only

---

## Handling

---

Format: Lyophilized

---

Reconstitution: Centrifuge the vial at 10,000 rpm for 1 minute, reconstitute at 200 µg/mL in sterile distilled water by gentle pipetting 2-3 times, don't vortex

---

Buffer: Lyophilized from a 0.2 µm filtered solution in 10 mM Hepes, 500 mM NaCl with 5 % trehalose, pH 7.4

---

Storage: 4 °C, -20 °C

---

Storage Comment: -20°C for 12 months as lyophilized, 2-8°C for 1 month under sterile conditions after reconstitution

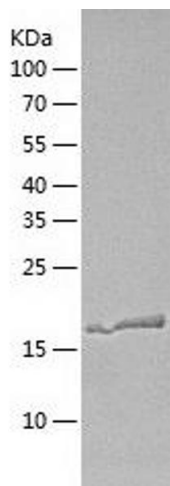
---

Expiry Date: 12 months

---

## Images

---



### Western Blotting

Image 1.