



[Go to Product page](#)

Datasheet for ABIN728638

anti-Laminin antibody (AA 901-1000)

4 Images

3 Publications

Overview

Quantity:	100 µL
Target:	Laminin (LN)
Binding Specificity:	AA 901-1000
Reactivity:	Human, Mouse, Rat, Rabbit
Host:	Rabbit
Clonality:	Polyclonal
Conjugate:	This Laminin antibody is un-conjugated
Application:	Western Blotting (WB), ELISA, Immunohistochemistry (Paraffin-embedded Sections) (IHC (p)), Flow Cytometry (FACS), Immunohistochemistry (Frozen Sections) (IHC (fro)), Immunofluorescence (Cultured Cells) (IF (cc)), Immunofluorescence (Paraffin-embedded Sections) (IF (p))

Product Details

Immunogen:	KLH conjugated synthetic peptide derived from human Laminin
Isotype:	IgG
Cross-Reactivity:	Human, Mouse, Rabbit, Rat
Predicted Reactivity:	Cow
Purification:	Purified by Protein A.

Target Details

Target:	Laminin (LN)
---------	--------------

Target Details

Alternative Name: laminin ([LN Products](#))

Background: Synonyms: CLM, LIS5, Laminin subunit beta-1, Laminin B1 chain, Laminin-1 subunit beta, Laminin-10 subunit beta, Laminin-12 subunit beta, Laminin-2 subunit beta, Laminin-6 subunit beta, Laminin-8 subunit beta, LAMB1

Background: Binding to cells via a high affinity receptor, laminin is thought to mediate the attachment, migration and organization of cells into tissues during embryonic development by interacting with other extracellular matrix components. Involved in the organization of the laminar architecture of cerebral cortex. It is probably required for the integrity of the basement membrane/glia limitans that serves as an anchor point for the endfeet of radial glial cells and as a physical barrier to migrating neurons. Radial glial cells play a central role in cerebral cortical development, where they act both as the proliferative unit of the cerebral cortex and a scaffold for neurons migrating toward the pial surface.

Gene ID: 3912

UniProt: [P07942](#)

Application Details

Application Notes: WB 1:300-5000
ELISA 1:500-1000
FCM 1:20-100
IHC-P 1:200-400
IHC-F 1:100-500
IF(IHC-P) 1:50-200
IF(IHC-F) 1:50-200
IF(ICC) 1:50-200

Restrictions: For Research Use only

Handling

Format: Liquid

Concentration: 1 µg/µL

Buffer: 0.01M TBS(pH 7.4) with 1 % BSA, 0.02 % Proclin300 and 50 % Glycerol.

Preservative: ProClin

Precaution of Use: This product contains ProClin: a POISONOUS AND HAZARDOUS SUBSTANCE, which should be

Handling

handled by trained staff only.

Storage: 4 °C,-20 °C

Storage Comment: Shipped at 4°C. Store at -20°C for one year. Avoid repeated freeze/thaw cycles.

Expiry Date: 12 months

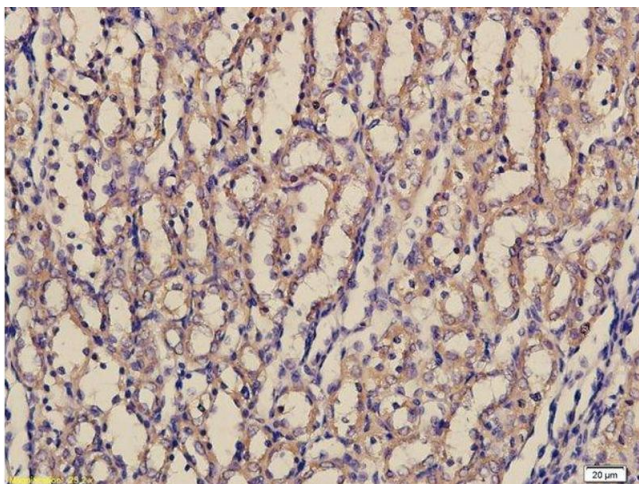
Publications

Product cited in: Miyauchi, Yasuchika, Fukumitsu, Ishii, Ogiso, Minami, Kojima, Yamaoka, Katayama, Kawai, Yoshitoshi-Uebayashi, Kita, Yasuda, Sasaki, Uemoto: "A novel three-dimensional culture system maintaining the physiological extracellular matrix of fibrotic model livers accelerates progression of hepatocellular carcinoma cells." in: **Scientific reports**, Vol. 7, Issue 1, pp. 9827, (2017) ([PubMed](#)).

Gong, Zhao, Liu, Lu, Liu, Zhou: "A Dynamically Tunable, Bioinspired Micropatterned Surface Regulates Vascular Endothelial and Smooth Muscle Cells Growth at Vascularization." in: **Small (Weinheim an der Bergstrasse, Germany)**, Vol. 12, Issue 41, pp. 5769-5778, (2016) ([PubMed](#)).

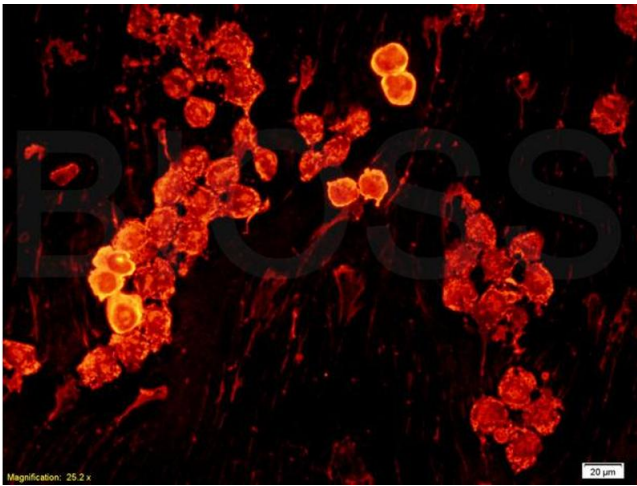
Su, Zhang, Song, Shi, Fu, Xia, Bai, Hu, Xu, Song, Song: "Tetrachlorobenzoquinone activates nrf2 signaling by keep1 cross-linking and ubiquitin translocation but not keep1-cullin3 complex dissociation." in: **Chemical research in toxicology**, Vol. 28, Issue 4, pp. 765-74, (2015) ([PubMed](#)).

Images



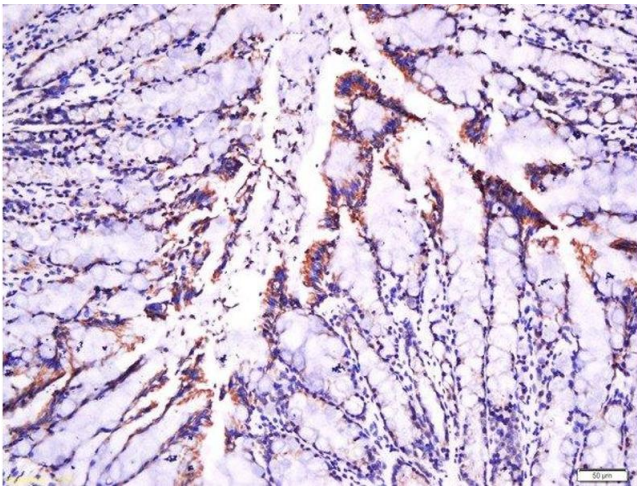
Immunohistochemistry

Image 1. Formalin-fixed and paraffin embedded rat kidney tissue labeled with Rabbit Anti-laminin Polyclonal Antibody, Unconjugated (ABIN728638) followed by conjugation to the secondary antibody and DAB staining.



Immunofluorescence

Image 2. Formalin-fixed and paraffin embedded human oral squamous cell carcinoma labeled with Anti-laminin Polyclonal Antibody, Unconjugated (ABIN728638) at 1:200, followed by conjugation to the secondary antibody.



Immunohistochemistry (Paraffin-embedded Sections)

Image 3. Paraformaldehyde-fixed, paraffin embedded rat intestine tissue, Antigen retrieval by boiling in sodium citrate buffer(pH6) for 15min, Block endogenous peroxidase by 3% hydrogen peroxide for 30 minutes, Blocking buffer (normal goat serum) at 37°C for 20min, Antibody incubation with Rabbit Anti-Laminin Polyclonal Antibody, Unconjugated at 1:500 overnight at 4°C, followed by a conjugated secondary and DAB staining

Please check the [product details page](#) for more images. Overall 4 images are available for ABIN728638.