

Datasheet for ABIN7286409  
**LUM Protein (AA 15-338) (His tag)**



[Go to Product page](#)

1 Image

## Overview

Quantity:	200 µg
Target:	LUM
Protein Characteristics:	AA 15-338
Origin:	Human
Source:	Escherichia coli (E. coli)
Protein Type:	Recombinant
Purification tag / Conjugate:	This LUM protein is labelled with His tag.
Application:	Western Blotting (WB), ELISA

## Product Details

Purity:	Greater than 95 % as determined by SDS-PAGE
Sterility:	0.2 µm filtered

## Target Details

Target:	LUM
Alternative Name:	Lumican ( <a href="#">LUM Products</a> )
Background:	Keratan sulfate proteoglycan lumican, KSPG lumican, LDC, LUM, LUM_HUMAN, Lumican, Lumican precursor, SLRR2D
Molecular Weight:	35.5 kDa
UniProt:	<a href="#">P51884</a>

## Target Details

Pathways: [Glycosaminoglycan Metabolic Process](#)

## Application Details

Application Notes: Optimal working dilution should be determined by the investigator.

Restrictions: For Research Use only

## Handling

Format: Lyophilized

Reconstitution: Centrifuge the vial at 10,000 rpm for 1 minute, reconstitute at 200 µg/mL in sterile distilled water by gentle pipetting 2-3 times, don't vortex

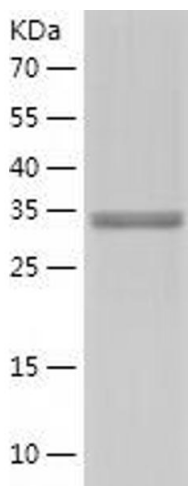
Buffer: Lyophilized from a 0.2 µm filtered solution in 10 mM Hepes, 500 mM NaCl with 5 % trehalose, pH 7.4

Storage: 4 °C, -20 °C

Storage Comment: -20°C for 12 months as lyophilized, 2-8°C for 1 month under sterile conditions after reconstitution

Expiry Date: 12 months

## Images



### Western Blotting

Image 1.