

Datasheet for ABIN7286629  
**UBE2D3 Protein (AA 1-147) (His tag)**



[Go to Product page](#)

1 Image

## Overview

Quantity:	200 µg
Target:	UBE2D3
Protein Characteristics:	AA 1-147
Origin:	Human
Source:	Escherichia coli (E. coli)
Protein Type:	Recombinant
Purification tag / Conjugate:	This UBE2D3 protein is labelled with His tag.
Application:	ELISA, Western Blotting (WB)

## Product Details

Purity:	Greater than 95 % as determined by SDS-PAGE
Sterility:	0.2 µm filtered

## Target Details

Target:	UBE2D3
Alternative Name:	UBE2D3 ( <a href="#">UBE2D3 Products</a> )
Background:	E2(17)KB3, MGC43926, MGC5416, PRO2116, UB2D3_HUMAN, UBC 4/5, UBC4/5, UBC4/5 homolog yeast, UBC4/5, S. cerevisiae, homolog of, UBCH 5C, UBCH5C, Ube2d3, Ubiquitin carrier protein, Ubiquitin carrier protein D3, Ubiquitin conjugating enzyme E2 17 kDa 3
Molecular Weight:	16.1 kDa

## Target Details

---

UniProt: [P61077](#)

Pathways: [Activation of Innate immune Response, Toll-Like Receptors Cascades](#)

## Application Details

---

Application Notes: Optimal working dilution should be determined by the investigator.

Restrictions: For Research Use only

## Handling

---

Format: Lyophilized

Reconstitution: Centrifuge the vial at 10,000 rpm for 1 minute, reconstitute at 200 µg/mL in sterile distilled water by gentle pipetting 2-3 times, don't vortex

Buffer: Lyophilized from a 0.2 µm filtered solution in 10 mM Hepes, 500 mM NaCl with 5 % trehalose, pH 7.4

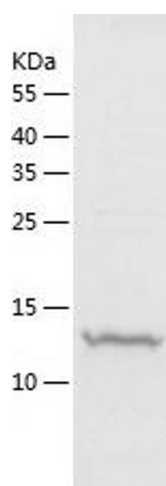
Storage: 4 °C, -20 °C

Storage Comment: -20°C for 12 months as lyophilized, 2-8°C for 1 month under sterile conditions after reconstitution

Expiry Date: 12 months

## Images

---



### Western Blotting

Image 1.