

Datasheet for ABIN7287053
ECH1 Protein (AA 34-328) (His tag)



[Go to Product page](#)

1 Image

Overview

Quantity:	200 µg
Target:	ECH1
Protein Characteristics:	AA 34-328
Origin:	Human
Source:	Escherichia coli (E. coli)
Protein Type:	Recombinant
Purification tag / Conjugate:	This ECH1 protein is labelled with His tag.
Application:	Western Blotting (WB), ELISA

Product Details

Purity:	Greater than 95 % as determined by SDS-PAGE
Sterility:	0.2 µm filtered

Target Details

Target:	ECH1
Alternative Name:	ECH1 (ECH1 Products)
Background:	4)-dienoyl-CoA isomerase, 5)-Delta(2, Delta(3, Delta(3 5) Delta(2 4) dienoyl CoA isomerase, Delta(3 5) Delta(2 4) dienoyl CoA isomerase mitochondrial, Delta3 5 delta2 4 dienoyl CoA isomerase, Dienoyl CoA isomerase, ECH 1, Ech1, ECH1_HUMAN
Molecular Weight:	32.3 kDa

Target Details

UniProt:	Q13011
Pathways:	Monocarboxylic Acid Catabolic Process

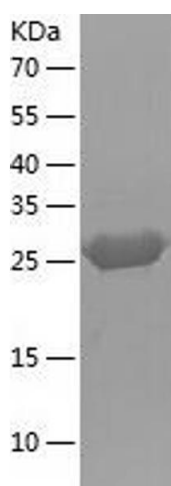
Application Details

Application Notes:	Optimal working dilution should be determined by the investigator.
Restrictions:	For Research Use only

Handling

Format:	Lyophilized
Reconstitution:	Centrifuge the vial at 10,000 rpm for 1 minute, reconstitute at 200 µg/mL in sterile distilled water by gentle pipetting 2-3 times, don't vortex
Buffer:	Lyophilized from a 0.2 µm filtered solution in 10 mM Hepes, 500 mM NaCl with 5 % trehalose, pH 7.4
Storage:	4 °C,-20 °C
Storage Comment:	-20°C for 12 months as lyophilized, 2-8°C for 1 month under sterile conditions after reconstitution
Expiry Date:	12 months

Images



Western Blotting

Image 1.