

Datasheet for ABIN7288409
UBE2E2 Protein (AA 1-201) (His tag)



[Go to Product page](#)

1 Image

Overview

Quantity:	200 µg
Target:	UBE2E2
Protein Characteristics:	AA 1-201
Origin:	Human
Source:	Escherichia coli (E. coli)
Protein Type:	Recombinant
Purification tag / Conjugate:	This UBE2E2 protein is labelled with His tag.
Application:	ELISA, Western Blotting (WB)

Product Details

Purity:	Greater than 95 % as determined by SDS-PAGE
Sterility:	0.2 µm filtered

Target Details

Target:	UBE2E2
Alternative Name:	UBE2E2 (UBE2E2 Products)
Background:	FLJ25157, UB2E2_HUMAN, UBC4/5 homolog yeast, UBCH 8, UbcH8, Ube2e2, Ubiquitin carrier protein E2, Ubiquitin conjugating enzyme E2 E2, Ubiquitin conjugating enzyme E2E 2, Ubiquitin conjugating enzyme E2E 2 (homologous to yeast UBC4/5)
Molecular Weight:	22 kDa

Target Details

UniProt: [Q96LR5](#)

Application Details

Application Notes: Optimal working dilution should be determined by the investigator.

Restrictions: For Research Use only

Handling

Format: Lyophilized

Reconstitution: Centrifuge the vial at 10,000 rpm for 1 minute, reconstitute at 200 µg/mL in sterile distilled water by gentle pipetting 2-3 times, don't vortex

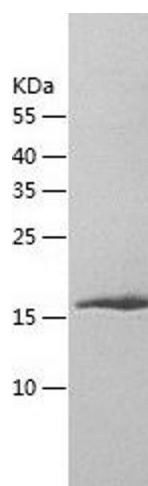
Buffer: Lyophilized from a 0.2 µm filtered solution in 10 mM Hepes, 500 mM NaCl with 5 % trehalose, pH 7.4

Storage: 4 °C, -20 °C

Storage Comment: -20°C for 12 months as lyophilized, 2-8°C for 1 month under sterile conditions after reconstitution

Expiry Date: 12 months

Images



Western Blotting

Image 1.