

Datasheet for ABIN7288757

**ARL6 Protein (AA 1-186) (His tag)**[Go to Product page](#)**1** Image

## Overview

Quantity:	200 µg
Target:	ARL6
Protein Characteristics:	AA 1-186
Origin:	Human
Source:	Escherichia coli (E. coli)
Protein Type:	Recombinant
Purification tag / Conjugate:	This ARL6 protein is labelled with His tag.
Application:	ELISA, Western Blotting (WB)

## Product Details

Purity:	Greater than 95 % as determined by SDS-PAGE
Sterility:	0.2 µm filtered

## Target Details

Target:	ARL6
Alternative Name:	<a href="#">ARL6 (ARL6 Products)</a>
Background:	ADP ribosylation factor like 6, ADP ribosylation factor like protein 6, ADP-ribosylation factor-like protein 6, Arl6, ARL6_HUMAN, Bardet Biedl syndrome 3 protein, Bardet-Biedl syndrome 3 protein, BBS3, MGC32934
Molecular Weight:	20.4 kDa

## Target Details

---

UniProt: [Q9H0F7](#)

## Application Details

---

Application Notes: Optimal working dilution should be determined by the investigator.

Restrictions: For Research Use only

## Handling

---

Format: Lyophilized

Reconstitution: Centrifuge the vial at 10,000 rpm for 1 minute, reconstitute at 200 µg/mL in sterile distilled water by gentle pipetting 2-3 times, don't vortex

Buffer: Lyophilized from a 0.2 µm filtered solution in 10 mM Hepes, 500 mM NaCl with 5 % trehalose, pH 7.4

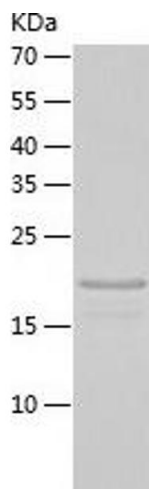
Storage: 4 °C, -20 °C

Storage Comment: -20°C for 12 months as lyophilized, 2-8°C for 1 month under sterile conditions after reconstitution

Expiry Date: 12 months

## Images

---



### Western Blotting

Image 1.