

Datasheet for ABIN7288761

**GABARAPL1 Protein (AA 1-117) (His tag)**[Go to Product page](#)**1** Image

## Overview

Quantity:	200 µg
Target:	GABARAPL1
Protein Characteristics:	AA 1-117
Origin:	Human
Source:	Escherichia coli (E. coli)
Protein Type:	Recombinant
Purification tag / Conjugate:	This GABARAPL1 protein is labelled with His tag.
Application:	ELISA, Western Blotting (WB)

## Product Details

Purity:	Greater than 95 % as determined by SDS-PAGE
Sterility:	0.2 µm filtered

## Target Details

Target:	GABARAPL1
Alternative Name:	GABARAPL1 ( <a href="#">GABARAPL1 Products</a> )
Background:	APG8 like, APG8L, ATG8, ATG8B, ATG8L, Early estrogen regulated protein, Early estrogen-regulated protein, GABA, GABA(A) receptor associated protein like 1, GABA(A) receptor-associated protein-like 1, GABARAPL1, GABARAPL1 a, Gamma aminobutyric acid receptor associated protein like 1
Molecular Weight:	12.8 kDa

## Target Details

UniProt: [Q9H0R8](#)

Pathways: [Autophagy](#)

## Application Details

Application Notes: Optimal working dilution should be determined by the investigator.

Restrictions: For Research Use only

## Handling

Format: Lyophilized

Reconstitution: Centrifuge the vial at 10,000 rpm for 1 minute, reconstitute at 200 µg/mL in sterile distilled water by gentle pipetting 2-3 times, don't vortex

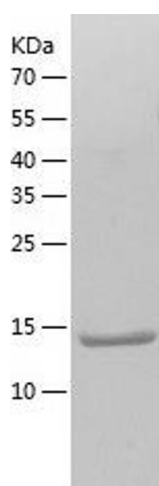
Buffer: Lyophilized from a 0.2 µm filtered solution in 10 mM Hepes, 500 mM NaCl with 5 % trehalose, pH 7.4

Storage: 4 °C, -20 °C

Storage Comment: -20°C for 12 months as lyophilized, 2-8°C for 1 month under sterile conditions after reconstitution

Expiry Date: 12 months

## Images



### Western Blotting

Image 1.