



[Go to Product page](#)

Datasheet for ABIN729328

anti-Abeta 1-40 antibody (C-Term)

1 Image

Overview

Quantity:	100 µL
Target:	Abeta 1-40
Binding Specificity:	C-Term
Reactivity:	Human, Rat, Mouse, Chicken, Cow, Dog, Pig
Host:	Rabbit
Clonality:	Polyclonal
Conjugate:	This Abeta 1-40 antibody is un-conjugated
Application:	Immunofluorescence (Paraffin-embedded Sections) (IF (p)), Immunohistochemistry (Paraffin-embedded Sections) (IHC (p))

Product Details

Immunogen:	KLH conjugated synthetic peptide derived from human beta-Amyloid 1-40
Isotype:	IgG
Cross-Reactivity:	Chicken, Cow, Dog, Human, Mouse, Pig, Rat
Purification:	Purified by Protein A.

Target Details

Target:	Abeta 1-40
Alternative Name:	beta-Amyloid 1-40 (Abeta 1-40 Products)
Background:	Synonyms: beta Amyloid1-40, beta Amyloid 1-40, beta-Amyloid 1-40, Amyloid 1-40, P340, A4,

Target Details

AAA, ABETA, ABPP, AD1, Alzheimers Disease Amyloid Protein, Amyloid B, Amyloid Beta A4 Protein Precursor, Amyloid Beta, Amyloid of Aging and Alzheimer Disease, APP, APPI, B Amyloid, Beta APP, Cerebral Vascular Amyloid Peptide, CTFgamma, CVAP, PN II, PN2, PreA4, Protease nexin II, A beta, A4_HUMAN.

Background: The cerebral and vascular plaques associated with Alzheimer's disease are mainly composed of Amyloid beta peptides. beta Amyloid is derived from cleavage of the Amyloid precursor protein and varies in length from 39 to 43 amino acids. beta Amyloid [1-40], beta Amyloid [1-42], and beta Amyloid [1-43] peptides result from cleavage of Amyloid precursor protein after residues 40, 42, and 43, respectively. The cleavage takes place by gamma-secretase during the last Amyloid precursor protein processing step. beta Amyloid [1-40], beta Amyloid [1-42], and beta Amyloid [1-43] peptides are major constituents of the plaques and tangles that occur in Alzheimer's disease. beta Amyloid and peptides have been developed as tools for elucidating the biology of Alzheimer's disease.

Molecular Weight: 4.3kDa

Gene ID: 351

Application Details

Restrictions: For Research Use only

Handling

Format: Liquid

Concentration: 1 µg/µL

Buffer: Aqueous buffered solution containing 1 % BSA, 50 % glycerol and 0.09 % sodium azide.

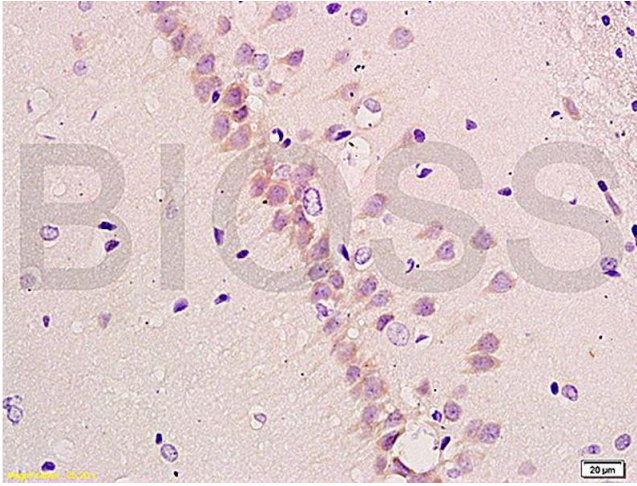
Preservative: Sodium azide

Precaution of Use: This product contains sodium azide: a POISONOUS AND HAZARDOUS SUBSTANCE which should be handled by trained staff only.

Storage: -20 °C

Storage Comment: Store at -20°C for 12 months.

Expiry Date: 12 months



Immunohistochemistry

Image 1. Formalin-fixed and paraffin embedded rat brain tissue labeled with Anti-beta-Amyloid 1-40 (CT) Polyclonal Antibody, Unconjugated (ABIN729328) at 1:200, followed by conjugation to the secondary antibody and DAB staining