

Datasheet for ABIN729448
anti-ZBTB7A antibody (AA 151-250)

5 Images

1 Publication

[Go to Product page](#)

Overview

Quantity:	100 µL
Target:	ZBTB7A
Binding Specificity:	AA 151-250
Reactivity:	Human
Host:	Rabbit
Clonality:	Polyclonal
Conjugate:	This ZBTB7A antibody is un-conjugated
Application:	Western Blotting (WB), ELISA, Immunohistochemistry (Paraffin-embedded Sections) (IHC (p)), Immunofluorescence (Cultured Cells) (IF (cc)), Immunofluorescence (Paraffin-embedded Sections) (IF (p)), Immunohistochemistry (Frozen Sections) (IHC (fro))

Product Details

Immunogen:	KLH conjugated synthetic peptide derived from human Pokemon
Isotype:	IgG
Cross-Reactivity:	Human
Predicted Reactivity:	Mouse,Rat
Purification:	Purified by Protein A.

Target Details

Target:	ZBTB7A
---------	--------

Target Details

Alternative Name:	Pokemon (ZBTB7A Products)
Background:	<p>Synonyms: LRF, FBI1, FBI-1, ZBTB7, ZNF857A, pokemon, Zinc finger and BTB domain-containing protein 7A, Factor binding IST protein 1, Factor that binds to inducer of short transcripts protein 1, HIV-1 1st-binding protein 1, Leukemia/lymphoma-related factor, POZ and Krueppel erythroid myeloid ontogenic factor, POK erythroid myeloid ontogenic factor, TTF-I-interacting peptide 21, TIP21, Zinc finger protein 857A, ZBTB7A</p> <p>Background: Plays a key role in the instruction of early lymphoid progenitors to develop into B lineage by repressing T-cell instructive Notch signals (By similarity). Specifically represses the transcription of the CDKN2A gene. Efficiently abrogates E2F1-dependent CDKN2A transactivation/de-repression. Binds to the consensus sequence 5'-[GA][CA]GACCCCCCCCC-3' (By similarity).</p>
Gene ID:	51341
UniProt:	O95365

Application Details

Application Notes:	WB 1:300-5000 ELISA 1:500-1000 IHC-P 1:200-400 IHC-F 1:100-500 IF(IHC-P) 1:50-200 IF(IHC-F) 1:50-200 IF(ICC) 1:50-200
Restrictions:	For Research Use only

Handling

Format:	Liquid
Concentration:	1 µg/µL
Buffer:	0.01M TBS(pH 7.4) with 1 % BSA, 0.02 % Proclin300 and 50 % Glycerol.
Preservative:	ProClin
Precaution of Use:	This product contains ProClin: a POISONOUS AND HAZARDOUS SUBSTANCE, which should be handled by trained staff only.
Storage:	4 °C, -20 °C

Handling

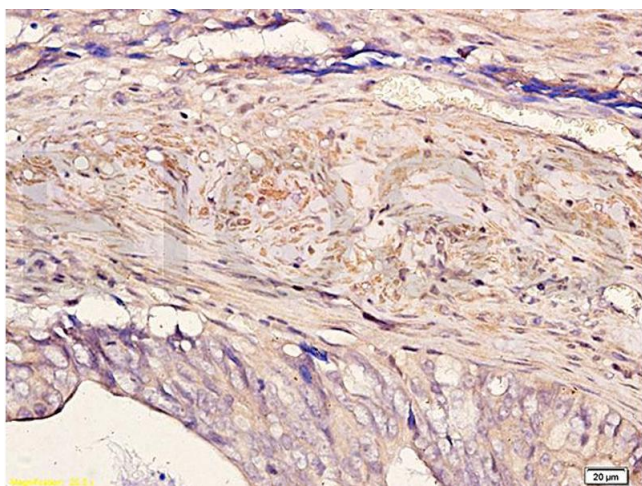
Storage Comment: Shipped at 4°C. Store at -20°C for one year. Avoid repeated freeze/thaw cycles.

Expiry Date: 12 months

Publications

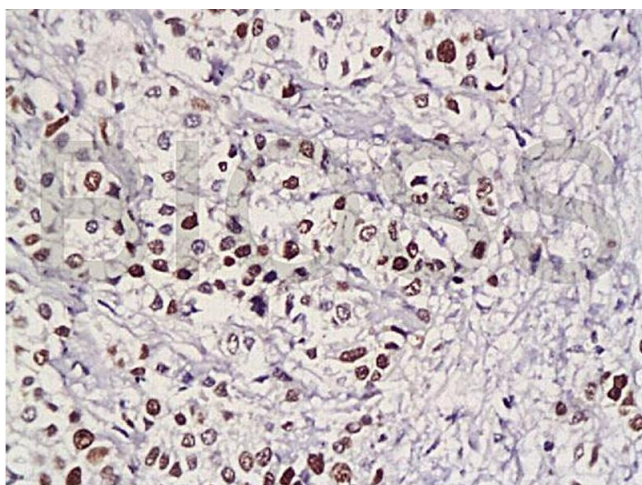
Product cited in: Zhao, Yao, Li, An, Chen, Sun, Kang, Wang, Hu: "Pokemon enhances proliferation, cell cycle progression and anti-apoptosis activity of colorectal cancer independently of p14(ARF)-MDM2-p53 pathway." in: **Medical oncology (Northwood, London, England)**, Vol. 31, Issue 12, pp. 288, (2014) ([PubMed](#)).

Images



Immunohistochemistry

Image 1. Formalin-fixed and paraffin embedded human colon carcinoma with Anti-Pokemon Polyclonal Antibody, Unconjugated (ABIN729448) at 1:200, followed by conjugation to the secondary antibody and DAB staining



Immunohistochemistry

Image 2. Formalin-fixed and paraffin embedded human gastric carcinoma with Anti-Pokemon Polyclonal Antibody, Unconjugated (ABIN729448) at 1:200, followed by conjugation to the secondary antibody and DAB staining

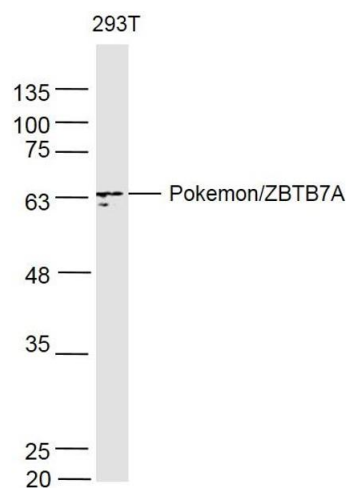


Image 3. 293T lysates probed with PokemonZBTB7A Polyclonal Antibody, Unconjugated at 1:500 dilution and 4°C overnight incubation. Followed by conjugated secondary antibody incubation at 1:10000 for 60 min at 37°C.

Please check the [product details page](#) for more images. Overall 5 images are available for ABIN729448.