

Datasheet for ABIN7294848  
**anti-ADAM10 antibody (Center)**



[Go to Product page](#)

1 Image

## Overview

Quantity:	100 µL
Target:	ADAM10
Binding Specificity:	Center
Reactivity:	Human, Mouse, Cow, Pig
Host:	Rabbit
Clonality:	Polyclonal
Conjugate:	This ADAM10 antibody is un-conjugated
Application:	Western Blotting (WB)

## Product Details

Immunogen:	KLH-conjugated synthetic peptide encompassing a sequence within the center region of human CD156c.
Specificity:	Recognizes endogenous levels of CD156c protein.
Characteristics:	Rabbit polyclonal antibody to CD156c
Purification:	The antibody was purified by immunogen affinity chromatography.

## Target Details

Target:	ADAM10
Alternative Name:	CD156c ( <a href="#">ADAM10 Products</a> )
Background:	KUZ, MADM, Disintegrin and metalloproteinase domain-containing protein 10, ADAM 10,

Target Details

	CDw156, Kuzbanian protein homolog, Mammalian disintegrin-metalloprotease, CD156c
Gene ID:	102, 11487
UniProt:	<a href="#">O14672</a> , <a href="#">O35598</a>
Pathways:	<a href="#">Notch Signaling</a> , <a href="#">EGFR Signaling Pathway</a>

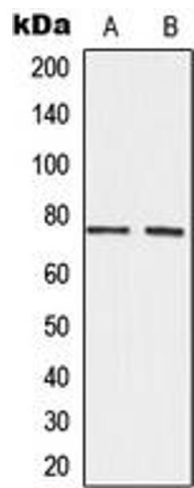
Application Details

Application Notes:	WB (1:500 - 1:1000)
Restrictions:	For Research Use only

Handling

Format:	Liquid
Buffer:	Liquid in 0.42 % Potassium phosphate, 0.87 % Sodium chloride, pH 7.3, 30 % glycerol, and 0.01 % sodium azide.
Preservative:	Sodium azide
Precaution of Use:	This product contains Sodium azide: a POISONOUS AND HAZARDOUS SUBSTANCE which should be handled by trained staff only.
Storage:	-20 °C
Storage Comment:	Shipped at 4°C. Upon delivery aliquot and store at -20°C for one year. Avoid freeze/thaw cycles.
Expiry Date:	12 months

Images



**Western Blotting**

**Image 1.** Western blot analysis of CD156c expression in HeLa (A), SP2/0 (B) whole cell lysates.